



DAY 2 - FINE ASIAN WORKS OF ART

雅古集珍 - 春季精美亞洲古董藝術品專場

Sunday April 2, 2023 3:00 PM PST | Los Angeles, California
週日 2023年4月2日 下午3:00 美國 洛杉磯











California Asian Art Auction Gallery USA is an emerging auction house established in 2012, but its roots goes far and beyond.

In 1998, the California Antique Art Center was found by a group of established Chinese art collectors and appraisers in Los Angeles, who specializes in Chinese ceramics, paintings, bronze, furniture, and jades. California Antique Art Center soon became a well-known Asian art gallery among Asian art collectors in Los Angeles and nation-wide.

In 2012, California Asian Art Auction Gallery USA was established, which specialized in Asian Art, especially Chinese Art.

Based in El Monte at East Los Angeles, California Asian Art Auction Gallery now offers more than four major Asian art auctions every year, and holds monthly or bimonthly estate and private collection sales, covering all areas of Asian art, including ceramics, jade, furniture, bronze, paintings, and other areas of interest.

With a deep understanding of the art market, California Asian Art Auction Gallery continues to excel at attracting the finest Asian works of art and achieving best results for our consignors. With over 17 years of professional experience and expertise, California Asian Art Auction Gallery remains the best place for people looking to buy and sell fine Asian works of art.



微信公眾賬號

請訂閱我們的微信公眾賬號
please subscribe to our wechat
public account





TEL: 626-281-9588



info@caa-auction.com



2646 Durfee Ave, El
Monte, CA 91732 USA



FAX: 1-888-859-4378

www.caa-auction.com

AUCTION DATE:

April 2nd, 2023
3:00 PM PST Sunday

PREVIEWS:

March 25th - 31st, 2023
11 AM - 4 PM or
by appointment

AUCTION LOCATION:

2646 Durfee ave.
El Monte, CA 91732

BUYERS PREMIUM

買家佣金

22% Premium will be added
to the purchase price of each
item unless otherwise noted.

Please note while our catalogers take care to be as accurate as possible, all weights, sizes, counts, and measurements are approximate, and may be subject to change before auction date. Prior to bidding, we recommend buyers to consult the additional photos provided and ask all pertinent questions (i.e. condition, size, etc.). Condition reports are provided upon request as a courtesy, and while care is given to be as accurate as possible, these are the opinions of our catalogers to their best knowledge and are intended to serve as a guide. If possible, we recommend inspecting the lots in person to ensure your satisfaction with the condition.

拍賣時間：

2023年4月2日（星期日）
洛杉磯時間 下午3:00

預展時間：

3月25日 - 31日
11 AM - 4 PM 或預約

預展/拍賣地點：

2646 Durfee ave.
El Monte, CA 91732 (洛杉磯)

BID LIVE ONLINE AT

網絡拍賣平台

www.liveauctioneers.com
www.invaluable.com

聯拍在線

易拍全球

拍賣之家

請注意此拍賣圖錄的拍品文字描述，包括尺寸、重量、年代、描述等僅供參考。拍品的真偽需買家自行判斷。本公司誠摯邀請各位買家在預展期間親臨現場上手拍品實物，并建議買家在拍賣前向本公司索取拍品的更多詳細照片及品相報告。

CALIFORNIA ASIAN ART AUCTION GALLERY USA
美國加州亞洲藝術品拍賣公司

中國歷代年表

Chinese History Chronology

Xia Dynasty	2205–1766 BC
Shang Dynasty	1766–1121 BC
Zhou Dynasty	1027–256 BC
Western Zhou	1027–771 BC
Eastern Zhou	770–221 BC
Spring and Autumn Period	1066–221 BC
Warring States Period	770–221 BC
Qin Dynasty	221–207 BC
Han Dynasty	206 BC–220 AD
Western Han	206 BC–9 AD
Eastern Han	25–220 AD
Six Dynasties Period	220–581 AD
Three Kingdoms	2200–280
Wei	220–265
Shu	221–263
Wu	220–280
Jin Dynasty	265–420
Western Jin	265–317
Eastern Jin	317–420
Southern Dynasties	420–588
Song	420–479
Qi	479–502
Liang	502–557
Qen	557–589
Northern Dynasties	386–588
Northern Wei	386–534
Eastern Wei	534–550
Western Wei	535–556
Northern Qi	550–577
Northern Zhou	557–581
Sui Dynasty	581–618 AD
Tang Dynasty	618–907 AD
Five Dynasties / Wu Tai	907–960 AD
Later Liang	907–923
Later Tang	923–936
Later Jin	936–947
Later Han	947–950
Later Zhou	951–960
Ten Kingdoms	907–979 AD

Liao Dynasty	907–1125 AD
Song Dynasty	960–1279 AD
Northern Song	960–1127
Southern Song	1127–1279
Western Xia Dynasty	1037–1227 AD
Jin Dynasty	1115–1234 AD
Yuan Dynasty	1206–1368 AD
Ming Dynasty	1368–1644 AD
Hongwu Period	1368–1398
Jianwen Period	1399–1402
Yongle Period	1403–1424
Hongxi Period	1424–1425
Xuande Period	1426–1435
Zhengtong Period	1436–1449
Jingtai Period	1450–1456
Tianshun Period	1457–1464
Chenghua Period	1465–1487
Hongzhi Period	1488–1505
Zhengde Period	1506–1521
Jiajing Period	1522–1566
Longqing Period	1567–1572
Wanli Period	1573–1620
Taichang Period	1620
Taiqi Period	1620–1627
Chongzhen Period	1627–1644
Qing Dynasty	1644–1911 AD
Shuzhi Period	1644–1661
Kangxi Period	1662–1722
Yongzheng Period	1723–1735
Qianlong Period	1735–1796
Jiaqing Period	1796–1820
Daoguang Period	1821–1850
Xianfeng Period	1851–1861
Tongzhi Period	1862–1874
Guangxu Period	1875–1908
Xuantong Period	1908–1911
Republic of China	1912–1949 AD
Hongxian Period	1915–1916 AD
People's Republic of China	1949–Present



1201

A WHITE JADE LANDSCAPE SNUFF BOTTLE WITH SKIN

Of rectangular form with russet skin relief carved to one side, depicting figures on a raft below cliff and trees, with green stone stopper.

Height: 2 1/2 in (6.3 cm) Width: 1 3/4 in (4.4 cm)

\$600-900

白玉帶皮山水鼻煙壺



1202

A CHINESE ROCK CRYSTAL CARVED 'LOTUS' SNUFF BOTTLE

Carved in low relief with lotus leaves and blossom, reverse with stack of books, sides with mythical beast masks in relief, fitted with stopper. 18th/19th century, Qing Dynasty period.

Height: 2 5/8 in (6.7 cm) Width: 1 5/8 in (4.1 cm)

\$300-500

Provenance:

Property from a East Los Angeles private collection

清 十八/十九世紀 水晶荷塘月色鼻煙壺

來源:

洛杉磯東區私人收藏

1203

A CHINESE CORAL CARVED 'QILIN' SNUFF BOTTLE

Carved in high relief with Qilin holding a lingzhi fungus branch in mouth, shown standing on a rocky base, the reverse further decorated with a smaller mythical beast and plum blossom, with stopper. 19th century, Qing Dynasty period.

Height: 2 1/2 in (6.3 cm) Width: 2 5/8 in (6.7 cm)

\$1000-2000

Provenance:

Property from a East Los Angeles private collection

清 十九世紀 珊瑚麒麟銜芝鼻煙壺

來源:

洛杉磯東區私人收藏



1204

A PORCELAIN 'ARMORIAL' SNUFF BOTTLE

The white porcelain snuff bottle painted with armorials on both sides, with agate stopper. 18th/19th century, Qing Dynasty period.

Height: 2 1/2 in (6.3 cm) Width: 2 1/8 in (5.4 cm)

\$300-500

Provenance:

Property from a East Los Angeles private collection

清 粉彩西洋族徽鼻煙壺

來源:

洛杉磯東區私人收藏





1205
A CARVED YELLOW GLAZE 'RIVERSCAPE'
SNUFF BOTTLE

Finely decorated to the exterior in relief with riverscape village scene reserved in white, against yellow glaze body, base carved with four character mark 'Wang Bingrong Zhi'. Qing Dynasty period.

Height: 3 1/2 in (8.9 cm) Width: 1 3/4 in (4.4 cm)

\$300-500

Provenance:

Property from a East Los Angeles private collection

清 王炳榮款 瓷雕湖光山色圖鼻煙壺

來源:

洛杉磯東區私人收藏



1206
A CHINESE YELLOW GLASS SNUFF BOTTLE

The rectangular Shaped snuff bottle incised with four character 'Qianlong' mark to the base, fitted with stopper. 19th Century, Qing Dynasty period.

Height: 3 1/4 in (8.3 cm) Width: 1 5/8 in (4.1 cm)

\$250-350

Provenance:

From a Pennsylvania private collection

清 乾隆款 黃料鼻煙壺

來源:

美國賓州費城托馬斯·A·克萊恩教授藏鼻煙壺系列。克萊恩先生為費城傑弗遜醫學院教授。此批鼻煙壺系列為其早年藏品一部分。



1207

A CHINESE AGATE 'ELDER' SNUFF BOTTLE

The snuff bottle carved with an elder figure using different tones of the stone in relief. 19th century, Qing Dynasty period.

Height: 2 1/4 in (5.7 cm) Width: 1 7/8 in (4.8 cm)

\$250-350

Provenance:

From a Pennsylvania private collection

清 瑪瑙巧雕高士鼻煙壺

來源:

美國賓州費城托馬斯·A·克萊恩教授藏鼻煙壺系列。克萊恩先生為費城傑弗遜醫學院教授。此批鼻煙壺系列為其早年藏品一部分。



1208

A CARVED WHITE PORCELAIN DOUBLE GOURD 'DRAGON' SNUFF BOTTLE

This white porcelain double gourd shaped snuff bottle carved in relief with sinuous dragon amidst dense clouds, fitted with a carved coral stopper, the base inscribed with four character mark 'Chen Guo Zhi Zhi'. 19th century, Qing Dynasty period.

Height: 3 in (7.6 cm) Width: 2 in (5.1 cm)

\$250-350

Provenance:

From a Pennsylvania private collection

清十九世紀 陳國治刻 雕白瓷龍紋葫蘆型鼻煙壺

來源:

美國賓州費城托馬斯·A·克萊恩教授藏鼻煙壺系列。克萊恩先生為費城傑弗遜醫學院教授。此批鼻煙壺系列為其早年藏品一部分。



1209

A RUSSET AND CELADON JADE SNUFF BOTTLE

Well hollowed, of flattened rectangular form, the stone is of celadon and russet tone, fitted with stopper. Qing Dynasty period.

Height: 2 1/2 in (6.3 cm) Width: 1 3/4 in (4.4 cm)

\$250-350

Provenance:

From a Pennsylvania private collection

清 青玉鼻煙壺

來源:

美國賓州費城托馬斯·A·克萊恩教授藏鼻煙壺系列。克萊恩先生為費城傑弗遜醫學院教授。此批鼻煙壺系列為其早年藏品一部分。

1210

AN UNUSUAL PUDDINGSTONE CARVED SNUFF BOTTLE

Of rounded form, the body and neck composed of attractive large and small russet, yellow, brown, orange reminiscent of 'pebbles' and 'rocks', fitted with stopper. Qing Dynasty period.

Height: 3 in (7.6 cm) Width: 2 1/4 in (5.7 cm)

\$250-350

Provenance:

From a Pennsylvania private collection

清 天然布丁石鼻煙壺

來源:

美國賓州費城托馬斯·A·克萊恩教授藏鼻煙壺系列。克萊恩先生為費城傑弗遜醫學院教授。此批鼻煙壺系列為其早年藏品一部分。



1211

A CYLINDRICAL PUDDINGSTONE SNUFF BOTTLE

Of cylindrical form, the body and neck composed of attractive large and small russet, yellow, brown, orange reminiscent of 'pebbles' and 'rocks', fitted with a similar puddingstone stopper. Qing Dynasty period.

Height: 2 1/4 in (5.7 cm) Width: 1 3/8 in (3.5 cm)

\$300-500

Provenance:

From a Pennsylvania private collection

清 天然布丁石鼻煙壺

來源:

美國賓州費城托馬斯·A·克萊恩教授藏鼻煙壺系列。克萊恩先生為費城傑弗遜醫學院教授。此批鼻煙壺系列為其早年藏品一部分。



1212

A RARE MAMMOTH TOOTH SNUFF BOTTLE

Of rounded form, the snuff bottle with attractive natural colored bands, fitted with turquoise and coral stopper. Qing Dynasty period.

Height: 2 3/8 in (6.0 cm) Width: 2 in (5.1 cm)

\$1000-1500

Provenance:

From a Pennsylvania private collection

清 天然猛獁牙鼻煙壺

來源:

美國賓州費城托馬斯·A·克萊恩教授藏鼻煙壺系列。克萊恩先生為費城傑弗遜醫學院教授。此批鼻煙壺系列為其早年藏品一部分。





1213

A JADEITE SNUFF BOTTLE

The stone of bright emerald and apple green color with white inclusions. Qing Dynasty period.

Height: 2 1/2 in (6.3 cm) Width: 2 in (5.1 cm)

\$2000-3000

Provenance:

Property from an important Northern California collection

清 翡翠鼻煙壺

來源:

北加州重要私人收藏



背面

1214

ZHOU LEYUAN: AN INSIDE PAINTED GLASS SNUFF BOTTLE

The interior painted on one side with a scholar seated and fishing in a boat beneath willows in a river landscape with pavilion and distant hills, beneath an inscription. The other side painted with vase and teapot behind a scholar's rock, with inscription above reading dedicated to Yao Xuan and dated to the autumn of 1887, signed Zhou Leyuan with two seal marks.

Height: 3 1/2 in (8.9 cm) Width: 2 in (5.1 cm)

\$2500-4500

周樂元 內畫山水博古圖玻璃鼻煙壺



1215

A WHITE JADE 'CLOUDS AND BAT' SNUFF BOTTLE

Carved around the body in low relief with clouds and bat, with green jade stopper. Qing Dynasty period.

Height: 2 1/2 in (6.2 cm) Length: 1 3/8 in (3.4 cm)

\$1000-2000

清 白玉雲蝠紋鼻煙壺

圓口，短頸，鼓腹下收，圈足，器型小巧可愛。本器上等和田白玉製成，玉質潔白細膩，瑩潤光潔。蓋鈕為碧玉製成，器身滿雕飾“雲蝠紋”，蝙蝠翱翔於雲間，姿態各異，祥雲迤邐，寓意千雲祥集，洪福紛至。佈局疏朗清新，生動流暢。



1216

A CHINESE YELLOW GLASS VASE

The pear shaped vase of egg yolk yellow semi-translucent tone. 19th/20th century.

Height: 7 1/2 in (19.1 cm) Width: 5 in (12.7 cm)

\$300-500

Provenance:

Property from a East Los Angeles private collection

清/民國 雞油黃料器玉壺春瓶

來源:

洛杉磯東區私人收藏



1217

A GILT BRONZE FIGURE OF SEATED LAMA

Cast seated on a double lotus plinth, the right hand raised in vitarka mudra and the left holding a pustakam, wearing voluminous robes and a pandita hat, with sealed base. 19th century, Qing Dynasty period.

Height: 10 3/4 in (27.3 cm) Width: 6 1/2 in (16.5 cm)

\$3000-5000

Provenance:

Property from a East Los Angeles private collection

清 銅鑲金上師坐像

來源:

洛杉磯東區私人收藏





1218

A KHMER BRONZE FIGURE OF THE MUCALINDA

Seated on a tall tiered throne in dhyanasana, both hands in dhyana mudra, wearing sanghati, face with serene expression, elongated earlobes, curled hairdress and ushnisha. Khmer 13th century or later

Height: 8 1/2 in (21.6 cm) Width: 3 in (7.6 cm)

\$1000-1500

For a similar and larger copper alloy Muchalinda figure, compare Lot 11, sold in Christie's New York, March 19, 2002, sold for USD 94,000 <https://www.christies.com/lot/lot-3878967>

Provenance:

Property from a East Los Angeles private collection

十三世紀或以後 高棉 青銅目支鄰陀坐像

來源:

洛杉磯東區私人收藏



1219

A SMALL CHINESE FAMILLE ROSE 'LIONS' DISH

The small dish painted to the interior with multiple buddhist lion playing with brocade ball, base inscribed with apocryphal chenghua mark. 19th century, Qing Dynasty period.

Height: 1 1/4 in (3.2 cm) Width: 3 5/8 in (9.2 cm)

\$1000-1500

Provenance:

Property from a East Los Angeles private collection

清 十九世紀 成化款 粉彩綉球獅紋小盤

來源:

洛杉磯東區私人收藏



1220

**A CHINESE FAMILLE ROSE PORCELAIN
'GENERAL' FIGURE**

The general figure is shown holding a seal on his right hand, wearing elaborate armor decorated in various enamels including yellow, green, red, blue, orange, turquoise green, brown, etc. The back of the robe decorated with a five clawed dragon. 19th century.

Height: 18 in (45.7 cm) Width: 7 1/2 in (19.1 cm)

\$1500-2000

Provenance:

Property from a East Los Angeles private collection

十九世紀 粉彩雕瓷將軍立像

來源:

洛杉磯東區私人收藏



1221

A COPPER ALLOY STANDING FIGURE OF DEITY

The figure standing with legs crossed on a plinth, hands holding as if playing a flute. 12th/13th century, Pala, East India.

Height: 5 1/2 in (14.0 cm) Width: 2 in (5.1 cm)

\$1000-1500

Provenance:

Property from a East Los Angeles private collection

帕拉王朝 十二/十三世紀 合金銅立佛

來源:

洛杉磯東區私人收藏





1222

**A VERY LARGE ROSEWOOD CARVING OF
BUFFALO AND BOYS**

Finely carved and pierced in fine details depicting a recumbent buffalo with three boys riding on its back. Late Qing Dynasty or Republic period.

Height: 16 1/2 in (41.9 cm) Width: 33 in (83.8 cm)

\$6000-9000

Provenance:

Property from a East Los Angeles private collection

清末/民國 紅木雕童子牧牛大擺件

來源:

洛杉磯東區私人收藏

1223

A COPPER ALLOY FIGURE OF

The multiple armed deity seated on double lotus throne, holding various attributes including sword, base sealed with vajra symbol. Possibly 12th/13th century, East India.

Height: 5 1/2 in (14.0 cm) Width: 4 in (10.2 cm)

\$800-1200

Provenance:

Property from a East Los Angeles private collection

或帕拉王朝 十二/十三世紀 合金銅文殊菩薩坐像

來源:

洛杉磯東區私人收藏



1224

AN INDIAN COPPER ALLOY FIGURE OF KALI

The ferocious goddess, who symbolizes the terrible aspect of Shiva Shakti, depicted holding a large sword and other attributes and seated upon three skulls, wearing a patterned dhoti and jewelry. 15th/16th century, India.

Height: 4 3/8 in (11.1 cm) Width: 3 in (7.6 cm)

\$800-1200

Provenance:

Property from a East Los Angeles private collection

印度 十五/十六世紀 合金銅大黑神女

來源:

洛杉磯東區私人收藏



1225

**A CHINESE LIMESTONE CARVED
'GUANYIN' HEAD WITH STAND**

The Goddess of Mercy surmounted with a smaller statue of amitabha and with her hair pulled up in an elaborate chignon, mounted on a rosewood rectangular stand. Ming/Qing Dynasty period.

Height: 11 1/2 in (29.2 cm) Width: 6 in (15.2 cm)

\$1500-2000

Provenance:

Property from the private collection of the Grayson family, Los Angeles & Portland Exhibition: Jadestone Gallery, New York, 2012-2013

明/清 大理石雕觀音菩薩佛頭

來源:

展覽: 紐約玉石藝廊(Jadestone Gallery), 2012-2013 洛杉磯/波特蘭格里森家族(Grayson Family)收藏



2012年紐約玉石藝廊展覽圖





1226

**A CHINESE BLACK LIMESTONE
'GUANYIN' HEAD WITH STAND**

Carved with her hair neatly tied behind her pointed headdress. The female deity with serene facial expression and downcast eye. 19th/20th century.

Height: 11 in (27.9 cm) Width: 5 1/4 in (13.3 cm)

\$800-1200

Provenance:

Property from the private collection of the Grayson family, Los Angeles & Portland

十九/二十世紀 黑色大理石菩薩佛頭

來源:

洛杉磯/波特蘭格里森家族(Grayson Family)收藏

1227

A NEPALESE COPPER ALLOY FIGURE OF MANJUSHRI

The deity seated with his left hand raised in vitarka mudra, right hand holding a sword, the face with serene and meditative expression. 19th century, Nepal.

Height: 6 1/2 in (16.5 cm) Width: 6 5/8 in (16.8 cm)

\$1500-2000

Provenance:

Property from a East Los Angeles private collection

尼泊爾 十九世紀 合金
銅文殊佛

來源:

洛杉磯東區私人收藏



1228

A CHINESE BLUE AND WHITE DRAGON BOWL

Painted around the exterior with two dragons in pursuit of a flaming pearls, the base with a six-character seal mark in underglaze blue. Republic period.

Height: 3 7/8 in (9.8 cm) Width: 8 1/4 in (21.0 cm)

\$500-1000

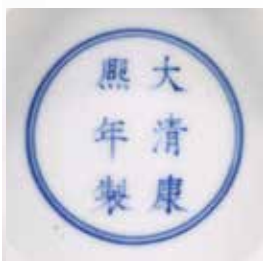
Provenance:

Property from a East Los Angeles private collection

民國 青花龍紋碗 康熙款

來源:

洛杉磯東區私人收藏



1229

A CHINESE RUSE-GLAZED VASE

The vase is finely potted with a pear-shaped body rising to a long neck and flared mouth, covered with a lustrous brown 'iron rust' glaze. The base is unglazed. Jin Dynasty period or later.

\$2000-3000

Provenance:

1. Property from the private collection of the Grayson family, Los Angeles & Portland.
2. Asiantiques, Florida, 2004

金 或更晚 磁州窯鐵鏽釉玉壺春瓶

來源:

洛杉磯/波特蘭格里森家族(Grayson Family)收藏
2004年購於佛羅里達州Asiantiques古董畫廊





1230

A COPPER ALLOY FIGURE OF SNAKE GODDESS

The deity seated above an animal skin covered plinth, right hand raised with palm facing forward, her neck surrounded by a snake, her face with serene expression. 19th century.

Height: 8 6/8 in (22.2 cm) Width: 6 in (15.2 cm)

\$500-1000

Provenance:

Property from a East Los Angeles private collection

十九世紀 合金銅蛇神像

來源:

洛杉磯東區私人收藏



1231

A WOOD CARVED DISPLAY SHELF

A Wood Carved Display Shelf, 19th century.

Height: 28 in (71.1 cm) Width: 32 in (81.3 cm)

\$300-500

Provenance:

Property from the private collection of the Grayson family, Los Angeles & Portland

十九世紀 硬木博古架

來源:

洛杉磯/波特蘭格里森家族(Grayson Family)收藏

1232

A COPPER ALLOY STANDING FIGURE OF APSARA

Cast in dancing posture, with the right leg raised, dressed in a finely decorated sampot, adorned with jewelry, the face with a serene expression, flanked by two elongated earlobes, surmounted by an elaborated crown. 17th/18th century, Khmer.

Height: 16 3/4 in (42.5 cm) Width: 6 1/4 in (15.9 cm)

\$1500–2500

Provenance:

Property from a East Los Angeles private collection

十七/十八世紀 高棉 合金銅飛天立像

來源:

洛杉磯東區私人收藏



1233

**A CHINESE BLUE AND WHITE 'BAMBOO AND PRUNUS'
VASE**

The vase is painted with a large prunus branch beside rocks and bamboo. The mouth is mounted with a later silver rim and cover with a stylised floral design. Qing Dynasty Kangxi period.

Height: 9 in (22.9 cm) Width: 5 in (12.7 cm)

\$2500-3500

Provenance:

Christie's New York, July 2016, Lot 113

清康熙 青花梅竹山石紋瓶

來源:

紐約佳士得, 2016年7月, Lot 113



1234

A CHINESE PAINTED SOAPSTONE GUANYIN FIGURE

The figure with her robe gathered gracefully around the body, the soft oval face carved with delicate features and the hair drawn up into a coiled topknot secured under veil, the incised decoration highlighted with red and green pigments. Qing Dynasty period, 18th century.

Height: 5 in (12.7 cm) Width: 4 in (10.2 cm)

\$1500-2000

Provenance:

Property from a East Los Angeles private collection

清十八世紀 壽山石彩繪觀音

來源:

洛杉磯東區私人收藏



1235

A CHINESE ARCHAIC BRONZE DAGGER GE

Chinese. With tapering blade with a median ridge on both sides that continues over the tubular socket to the tang. Shang Dynasty period. (c. 1600-1046 BCE)

Width: 8 1/2 in (21.6 cm)

\$500-1000

商 青銅戈 連坐





1236

A CHINESE MARBLED GREEN GLAZE VASE

Chinese. The marbled body potted with compressed globular body rising to everted rim, covered overall with a rich green glaze. Tang or Song Dynasty period.

Height: 3 7/8 in (9.8 cm) Width: 2 1/2 in (6.3 cm)

\$500-1000

唐/宋 綠釉絞胎瓶



1237

AN AGARWOOD CARVED 'GOLD-BEAD' ARCHER'S RING

The agarwood carved ring is inlaid in tiny gold beads with stylized character and auspicious symbols. Qing Dynasty period.

Length: 1 1/4 in (3.1 cm) Diameter: 1 3/8 in (3.5 cm)

\$300-500

清 沉香木鑲金珠扳指

1238

A BRONZE CAST GOLD-SPLASHED 'GUI' CENSER

Finely cast with a compressed globular body rising to a flared rim from a short foot, flanked by two lion-head handles, the base with an apocryphal Xuande inscription, the patina of a caramel-brown color with scattered gold splashed spots. Qing Dynasty

Height: 3 1/2 in (8.9 cm) Width: 9 1/2 in (24.1 cm)

\$500-1000

清 銅灑金獅耳簋式爐



1239

A BAMBOO CARVING OF TWO LIONS

This carving consists of two lions playing together, the body with traces of red paint. Qing Dynasty period.

Height: 3 3/4 in (9.5 cm) Width: 6 in (15.2 cm)

\$300-500

清 竹雕太獅少獅擺件



1240

A CHINESE CINNABAR LACQUER 'BUDAI AND BOYS' SQUARE PLATE

Of square form, the interior finely carved through the red lacquer to depict the budai accompanied by two boys in a garden setting, the underside decorated with floral decorations, the base lacquered dark brown. Accompanied with original Japanese wooden box. 19th century.

Height: 1 in (2.5 cm) Width: 12 3/4 in (32.4 cm)

\$800-1200

清 剔紅彌勒童子紋方盤 帶木盒



1241

A YELLOW JADE ARCHAISTIC ORNAMENT

A Yellow Jade Archaistic Ornament. Qing Dynasty period.

Height: 3 3/8 in (8.3 cm) Length: 1 7/8 in (5.0 cm)

\$1000-1500

清 黃玉鳳鳥紋碟型佩



1242

A YELLOW JADE 'MYTHICAL BEAST' BELT HOOK

A Yellow Jade 'Mythical Beast' Belt Hook. Qing Dynasty period.

Height: 3 1/8 in (7.8 cm) Length: 1 1/2 in (3.6 cm)

\$1000-1500

清 黃玉獸紋帶鉤



1243

A CHINESE WHITE JADE CAMEL

A Chinese White Jade Camel. Song to Ming Dynasty period.

Height: 1 2/8 in (3.0 cm) Length: 2 1/8 in (5.3 cm)

\$800-1200

宋至明 白玉駱駝



1244

A TIBETAN GILT COPPER FIGURE OF JAMBHALA

Tibetan. seated in lalitasana on a lotus throne, the right hand holding a jambhara fruit and the left a jewel-spewing mongoose, clad in a dhoti and scarf, wearing a five-pointed crown framing, his stern face; with turquoise bead inlays. 17th century or earlier.

Height: 5 3/4 in (14.5 cm) Width: 3 5/8 in (9.2 cm)

\$2500-3500

十七世紀 或更早 鑲金銅財神坐像



1245

A RED AND BLACK ENAMEL FIGURES BOWL

Painted around the exterior in iron red with various immortals, the hair enameled in black, the base inscribed with apocryphal Ming reign mark.

Height: 2 1/2 in (6.2 cm) Diameter: 5 2/8 in (13.3 cm)

\$1500-2000

清 磬紅八仙人物紋碗

圓口，深腹，直圈足。胎質潔白細膩，釉汁溫潤透亮。外壁繪“八仙人物紋”，人物神情各異，形像生動，繪工極為精湛，構圖嚴謹，佈局合理。

“大明成化年制款識”，為寄託款。



1246

A FAMILLE VERTE FIGURES AND POEM BOWL

The rounded sides painted in tones of green, yellow and aubergine, depicting a landscape scene with rocks and trees, the reverse decorated with a elderly farmer and his buffalo, further inscribed with a poem matching the subject. Qing Dynasty period.

Height: 3 3/4 in (9.3 cm) Diameter: 8 2/8 in (20.8 cm)

\$2000-3000



清 五彩漁家樂紋詩文碗

形制規整，碗體頗大，圓口，深腹，圈足。胎質細膩溫潤，釉汁肥厚。外壁五彩繪“漁人”“山石”“牧牛”“花草”等。構圖嚴謹，分佈均勻，人物神情生動，柳樹隨風飄揚，牧牛立於水面之上，好一副安詳美好的畫面。墨彩書“雨笠冒宿霧，風蓑擁春寒。破塊得甘霖，齧脰浸微瀾。泥深四蹄重，日暮兩股酸。謂彼牛後人，著鞭無作難。

1247

A FAMILLE ROSE 'BOGU' FLOWERS BOWL

The bowl exterior decorated with medallions enclosing various vases and treasure objects, separated by stylised floral sprays, base inscribed with reign mark.

Height: 2 1/2 in (6.3 cm) Length: 5 1/2 in (13.7 cm)

\$1000-1500



清 粉彩花卉開光清供紋碗

圓口，斜腹，圈足。形制規整，釉色潔白細膩，瑩潤光潔。器身粉彩繪“纏枝花卉紋”，花朵碩大飽滿，枝葉茂盛纏繞。描金開光繪“太平有像”“鼎”“磬”等紋樣，繪工精細，富麗堂皇，佈局繁縟，色彩鮮豔奪目，裝飾風格華麗，極為珍貴。
“大清嘉慶年制”款識。



1248

A JADE CARVED SWORD POMMEL

Of circular section, the domed centre incised with a four lobe motif surrounded by a field of raised comma spirals, the underside with a circular channel for attachment, the celadon stone with few small areas of calcifications. Han Dynasty period.

Height: 1 1/8 in (2.8 cm) Diameter: 1 7/8 in (4.9 cm)

\$1000-1500

漢 玉谷紋劍首

本器為玉劍飾中的劍首，為鑲嵌於劍柄持握底端之物。古籍中記載劍飾用品不僅是貴族身份的象徵物，更是天子饋贈臣子以為榮寵之賞賜。青玉製成，質地緻密有光澤，包漿肥厚，色澤純正濃郁，局部帶有灰皮，正面四周雕刻“谷紋”，顆粒飽滿，分佈均勻，佈局規整，立體感強。中心打挖雕飾“如意紋”。背面光素，經拋光後寶光盈盈，十分悅目，琢有圓形溝槽，以便與劍柄契合。



1249

A CHINESE INSCRIBED TIANHUANG SEAL

The seal has an irregular-shaped top, body carved in shallow relief with mountains and trees, inscribed with two character 'Xi Yuan', seal face carved with six character inscriptions. Qing Dynasty period.

Height: 2 7/8 in (7.2 cm) Length: 7/8 in (2.4 cm)

\$2000-3000

清 隨型山水人物田黃印章

印為長方形，頂部有自然傾斜，色澤溫潤飽滿，介於金黃、橘紅色之間；質地通透，脂潤瑩潔，有半透明感，石紋肌理內可見蘿蔔紋狀細紋，晶瑩燦爛，為田黃石上品。薄意雕“山水人物紋”，構圖巧妙，層次明晰，運刀如筆，極為傳神。邊款：“西園”，印文：即今漂泊干戈際。



1250

A WHITE JADE 'CHILONG' PENDANT

The reticulated pendant carved in the form of sinuous chilong grabbing a lingzhi branch. Qing Dynasty period.

Height: 2 1/8 in (5.2 cm) Length: 1 1/2 in (3.8 cm)

\$800-1200

清 白玉螭龍紋佩

和田白玉製成，玉質潔白細膩，瑩潤光潔，光氣十足。採用浮雕，透雕，鏤雕等多種技法，雕刻“螭龍紋”，螭龍尖耳，圓眼，方鼻，闊嘴，身姿生動，穿插自如，長尾分叉上卷。



1251

A LARGE CHINESE BLACKISH GREEN JADE RITUAL SCEPTER

The thickly cut blade of gently waisted outline tapering from the two projecting flanges towards the curved end, the tang with a hole drilled from one side, the opaque stone smoothly polished and with some surface calcifications. Shang Dynasty period or later.

Height: 2 7/8 in (7.0 cm) Length: 11 5/8 in (29.5 cm)

\$2000-3000

商 或更晚 青玉牙璋

牙璋是原始社會祭祀的禮器，是以其特殊功能作用於禮制王權性質的古代中國的奴隸社會。文獻記載，「以赤璋禮南方」，還有天子巡狩時祭祀山川以及發兵所用之符，即用玉璋。本器輪廓簡約，線條優雅，琢磨細膩，且極其纖薄。雙叉，尖刃，長援，短內，一孔。青玉製成，局部帶有褐紅色沁色及灰白沁，沁色自然，玉質優良。





1252

A CHINESE YELLOW JADE WASHER

Of circular form, the washer carved to the interior in low relief with bat and peach amidst clouds, the outer rim carved with reticulated 'petal' borders. The base inscribed with four character mark. The stone is of pale yellow tone. Qing Dynasty period.

Height without stand: 7/8 in (2.3 cm) Diameter: 7 7/8 in (20.0 cm)

\$3000-5000

清 黃玉福壽雙全紋花型洗

上等黃玉製成，材料碩大規整，玉色甘黃，瑩潤光潔，光彩奪目，溫潤厚澤，凝蘊章華，拋光精到。形制特殊罕見，洗呈圓型，四周帶有透雕如意型耳，共八個，對稱相連，規矩大方。洗掏膛規矩，洗內淺腹，壁內光滑。洗心浮雕“蝙蝠”“蟠桃”“卷雲紋”，立體感強烈。祥蝠生動可愛，蝙蝠是中國古代傳統裝飾圖案，蝙蝠指福氣多而長壽，寓意美好。兩枚壽桃透熟欲墜，飽滿瑩潤，枝葉繁茂，經脈畢現。周身卷云密布，繁而不亂，仙氣十足。“蝙蝠”“壽桃”，有福壽雙全之意。整器取材優良，器型碩大，極其難得，打磨細緻，紋飾線條流暢，細節宛然在目結構嚴謹有度，形制典雅，將高超工藝和吉祥紋飾與之結合，氣度宏大，凸顯無比高貴的宮廷氣息。底部刻有“子孫永寶”篆書款識，字跡清晰，線條優美。寓意美好，希望子孫後代能夠珍之藏之的願望。帶木座。



1253

AN ARCHAIC BRONZE MODEL OF STANDING BUFFALO

This archaic statue realistically cast in the form of standing buffalo, overall polished and with patches of green patina. Han Dynasty period.

Height: 5 5/8 in (14.0 cm) Length: 12 2/8 in (31.0 cm) Width: 8 1/8 in (20.5 cm)

\$3800-5800

漢 青銅牛

青銅制成，銅質優良，銅牛四肢直立，雙角前凸，眼珠滾圓，牛鼻向前突出，肌肉豐滿，粗壯有力，牛尾下垂，弧度柔和優雅。整體造型穩重踏實，身形雄壯，造型比例恰當。



1254

A LARGE WHITE JADE 'LONGEVITY' PHOENIX HANDLE VASE

Of baluster form with phoenix form handles, finely carved in low-relief around the body with archaistic phoenix decorations flanking a stylized 'shou' (longevity) character at the center on each side, the cover surmounted with a skillfully carved recumbent buddhist lion as finial, the stone is of white tone with areas of russet tone. Mid Qing Dynasty period.

Height: 10 1/2 in (26.5 cm) Length: 4 2/8 in (10.7 cm)

\$6000-9000

清中期 大型白玉雙鳳耳夔壽紋瓶





1255

A CHINESE BLUE AND WHITE 'DRAGON' DISH

Late Qing Dynasty period. Painted on the interior with a writhing dragon reaching for a flaming pearl amidst flame wisps, the exterior similarly decorated with two dragons, the base inscribed six-character apocryphal Qianlong seal mark.

Height: 1 1/2 in (3.8 cm) Width: 7 1/4 in (18.4 cm)

\$1500-2500

清晚期 青花趕珠龍紋盤

盤口外擴，淺弧腹，底承圈足，青花髮色明亮清晰，盤心繪飾一條立舞威龍，趾爪有力，氣勢磅礴，神形兼具，其身著火焰，身前戲火珠，實為精彩。

“大清乾隆年制”款識。



1256

A CELADON AND RUSSET JADE DISC BI

Both sides of the disc are carved in low relief with various types of scrolls and cloud motifs, further carved with four stylized mythical beasts on the outer edge. The stone is of mottled dark brown, russet, and celadon tone. Spring and Autumn period or later.

Width: 2/8 in (0.5 cm) Diameter: 5 7/8 in (15.0 cm)

\$1200-1800

春秋時期 或更晚 夔龍紋出郭玉璧

青白玉製成，玉質溫潤細膩，大部分帶有黑褐色沁色，沁色自然。出廓雕琢“夔龍紋”，夔龍圓眼，闊鼻，口開張，長尾彎卷，藝術性極高。環身滿飾“勾雲紋”，雕刻精細，曲線流暢，富有動感，紋飾繁密卻佈局清晰，構圖新穎，極富巧思。

可參閱上海震旦博物館展品春秋晚期四獸紋出廓璧

1257

A WHITE JADE 'MAGPIE AND PLUM BLOSSOM' VASE

The round flattened body rising from a splayed foot, the central body carved in low-relief with to the front and reverse the scene of magpie perching on gnarled prunus branch, curved shoulders flanked by stylized s-shaped handles, the cover with canted roofed sides, all below an faceted knop, the stone of even white tone with russet area on the foot. Qing Dynasty period.

Height: 8 7/8 in (22.5 cm) Width: 5 5/8 in (14.0 cm)

\$10000-15000

清 白玉喜鹊登梅赏瓶



1258

A RUSSET AND WHITE JADE BI DISC

The disc is carved on both sides with comma-spiral motifs, flanked on both sides with a pair of phoenix, the stone is of white and russet tone. Western Han Dynasty or later.

Height: 2 5/8 in (6.6 cm) Length: 3 7/8 in (9.8 cm) Width: 2/8 in (0.4 cm)

\$1500-2000

西漢 或以後 玉龍紋出廓圓璧

此出廓雙龍璧造型優美，璧面內部飾浮雕谷紋，穀粒小而圓，較高凸起，上以陰線勾出渦紋，排列有序，剔地干淨利落。整器玉質上乘，氣韻靈動，巧奪天工，是持有者身份地位之象徵。





1259

A ZITAN JADE EMBELLISHED CIRCULAR BOX

The top of the cover adorned with two magpies perching on flower branch, variously set with agate, mother-of-pearl, turquoise, soapstone, jadeite, lapis lazuli, and jade. Qing Dynasty period.

Height: 3 7/8 in (10.0 cm) Width: 7 7/8 in (20.0 cm)

\$3500-5500

清 紫檀嵌百寶花鳥紋蓋盒



1260

**A CHINESE BRONZE ARCHAISTIC RECTANGULAR
CENSER**

Of rectangular form with rectangular handles, richly patinated, the
base cast with a two character mark. Qing Dynasty period.

Width: 4 3/4 in (12.0 cm)

\$2500-3500

清 铜四足长方馬槽爐





1261

A HUANGHUALI CARVED 'TAOTIE' BRONZE INCENSE BURNER

Qing Dynasty period. Of cylindrical form with square projections on four sides, divided into three registers and the center raised panel carved in shallow relief with stylized taotie mask, the interior carved out with copper lining.

Height: 5 1/8 in (13.0 cm) Length: 5 7/8 in (15.0 cm) Width: 5 7/8 in (15.0 cm)

\$5000-8000

清 黃花梨獸面紋琮式爐

琮這種器型最早來自上古玉琮。玉琮是一種內圓外方的筒形玉器，為中國古代的重要禮器之一。據戰國《周禮·春官·大宗伯》記載：“以玉作六器，以禮天地四方。以蒼壁禮天，以黃琮禮地。”一般認為，玉琮與宗教祭祀、財富權力有關。

此件爐器型仿玉琮而制，用黃花梨制成，色澤沈斂紅潤，文理美觀，包漿厚重。整體外方內圓，圓口，短直頸，平折肩，四面方體，寓天圓地方之意。器身四面皆浮雕“饕餮紋”，刀工流暢細膩，可謂精工巧奪。爐心為紅銅制成，銅質優良。整體氣勢恢宏，為具陳設和實用於一身的佳品。



1262

A CHINESE BRONZE TRIPOD CENSER

The squat body below a rigid neck and mouth rim, the base with a four-character mark. Qing Dynasty period.

Width: 7 1/8 in (18.0 cm)

\$2500-3500

清 銅三足爐



1263

A PAIR OF CHINESE CLOISSONNE ENAMEL LOTUS BONSAI

Each jardiniere with rounded sides, the exterior decorated in cloisonné enamel enclosing scenes of lotus ponds and egrets in shaped cartouches within dense foliate scroll blue enamelled ground, the top planted with lotus buds and leaves, accompanied with hardwood stands. Qing Dynasty period.

Height: 33 in (83.8 cm) Width: 13 1/2 in (34.3 cm)

\$10000-15000

清 銅胎掐絲琺瑯荷花盆景一對 帶紅木幾

花盆採用景泰藍工藝製作而成，銅胎，缸型，敞口，鼓腹，腹部下收，圈足。主體在銅胎上填以天藍色地，色澤均勻，並嵌以銅絲，組成了滿地花草紋，枝藤細線纏繞，九瓣形花瓣，分別塗繪紅、黃、藍、白諸色琺瑯彩，形成彩飾，色澤明快。盆內滿填以“荷葉”“荷花”“蓮蓬”，自然曲折。這件盆景具有清代宮廷御用器物的風格，是宮廷陳設中的精品，置於室內桌旁、架上，不僅美觀大方，而且頗有華貴氣質。





1264

A WHITE JADE 'LINGZHI' BRUSH WASHER AND STAND

The deep hollowed vessel in the form on a large lingzhi head borne on a gnarled branch and surrounded by smaller lingzhi heads, the stone of an attractive white tone with minor inclusions, hardwood stand. Qing Dynasty period.

Width: 4 3/4 in (12.0 cm)

\$3500-5500

清 白玉靈芝隨型筆洗



1265

A CHINESE TIANHUANG 'MYTHICAL BEAST' SEAL

The seal surmounted with a coiled mythical beast, the tail finely detailed with incised lines, the stone is of golden caramel tone, the seal face carved with two characters. Qing Dynasty period.

Height: 1 5/8 in (4.0 cm) Length: 1 1/8 in (2.8 cm) Width: 1 5/8 in (4.0 cm)

\$2500-3500

清 田黃獸鈕印章





1266

**A CHINESE LONGQUAN
CELADON MALLET VASE**

The tapering cylindrical body surmounted by a tall columnar neck and flanked by a pair of serpentine dragon-fish, covered overall in a sea-green glaze, with box. Song Dynasty period.

Height: 11 1/2 in (29.2 cm)

Width: 5 in (12.7 cm)

\$3500-5000

Provenance:

Property from an important
Northern California collection

宋 龍泉摩羯魚雙耳瓶

來源:

北加州重要私人收藏

1267

AN UNUSUAL YELLOW GLAZED CONICAL VASE

The conical vase covered overall with amber yellow glaze and suffused with network of light craquelure, flanked by pair of triangle-shaped handles. Liao Dynasty period or later.

Height: 8 in (20.3 cm) Width: 5 in (12.7 cm)

\$1500-2500

Provenance:

Property from an important Northern California collection

遼或以後 黃釉錐型雙系瓶

來源:

北加州重要私人收藏





1268

A CHINESE QINGBAI MOULDED 'LOTUS' DISH

Finely potted with steep sides rising from a short straight foot, molded to the interior with a center of two lotus flowers and leaf, encircled with mandarin ducks and phoenix amidst lotus peonies, covered overall in a pale blue glaze save for the exposed rim. Song Dynasty period.

Height: 2 1/4 in (5.7 cm) Width: 8 in (20.3 cm)

\$1500-2500

Provenance:

Property from an important Northern California collection

宋 青白印花荷塘紋碗

來源:

北加州重要私人收藏



1269

A QINGBAI INCISED BOWL

Of conical form, the deep flaring sides rising from a straight foot to a hexalobed rim, interior freely incised with scrolling flowers. Song Dynasty period.

Height: 2 1/2 in (6.3 cm) Width: 7 1/4 in (18.4 cm)

\$1500-2500

Provenance:

Property from an important Northern California collection

宋 青白影青刻花葵口碗

來源:

北加州重要私人收藏

1270

A CHINESE JIZHOU STYLE BOWL

The bowl interior covered with splash of purplish cream glaze around the black glazed center, the exterior covered with black glaze and freely decorated with splash of cream colored glaze, the foot unglazed. Song Dynasty period.

Height: 2 3/8 in (6.0 cm) Width: 6 1/8 in (15.6 cm)

\$1000-2000

Provenance:

Property from an important Northern California collection

宋 吉州窯碗

來源:

北加州重要私人收藏



1271

A PAIR OF JIZHOU BLACK GLAZE BOWLS

Song/Yuan Dynasty period. Accompanied with box.

Height: 1 7/8 in (4.8 cm) Width: 4 1/4 in (10.8 cm)

\$1000-2000

Provenance:

Property from an important Northern California collection

宋/元 吉州窯小碗一對

來源:

北加州重要私人收藏





1272

A HENAN BLACK GLAZED DOUBLE GOURD VASE

The double gourd form vase rises to a wide everted rim, overall covered in thick glossy black glaze saved for the base. Song or Yuan Dynasty period.

Height: 8 1/2 in (21.6 cm) Width: 6 in (15.2 cm)

\$1000-2000

Provenance:

Property from an important Northern California collection

宋/元 黑釉葫蘆瓶

來源:

北加州重要私人收藏



1273

A JIZHOU TORTOISESHELL CONICAL BOWL

The interior and exterior decorated with a rich dark brown glaze liberally splashed in translucent golden glaze in imitation of mottled tortoiseshell, base unglazed. Song Dynasty period.

Height: 2 3/8 in (6.0 cm) Width: 6 3/8 in (16.2 cm)

\$1000-2000

Provenance:

Property from an important Northern California collection

宋 吉州窯玳瑁碗

來源:

北加州重要私人收藏



1274

A CHINESE JIZHOU 'TORTOISE SHELL' GLAZED BOWL

With the deep rounded sides flaring from a narrow flat foot, covered overall with a brownish-black glaze and splashed with cream-caramel tones simulating tortoiseshell, the glaze finishing just above the knife-pared foot, the base unglazed revealing the buff body. Song Dynasty period.

Height: 1 7/8 in (4.8 cm) Width: 4 3/8 in (11.1 cm)

\$800-1200

Provenance:

Property from an important Northern California collection

南宋 吉州窯玳瑁盃

來源:

北加州重要私人收藏



1275

A JIZHOU BLACK GLAZED 'LEAF' BOWL

The conical body rising from a short foot and covered overall in a deep brown-black glaze, the interior decorated with a leaf, the foot left unglazed revealing the pale body. Southern Song Dynasty period.

Height: 2 1/2 in (6.3 cm) Width: 6 1/8 in (15.6 cm)

\$2000-3000

Provenance:

Property from an important Northern California collection

南宋 黑釉吉州窯木葉盞

來源:

北加州重要私人收藏



1276

A LARGE CIZHOU PAINTED 'PEONY' VASE

the ovoid body tapering to a splayed foot and surmounted by a tall trumpet neck and flared rim, painted in black around the exterior with two leafy peony sprays, the base unglazed revealing the buff stoneware body. Song Dynasty period.

Height: 15 in (38.1 cm) Width: 8 in (20.3 cm)

\$1500-2500

Provenance:

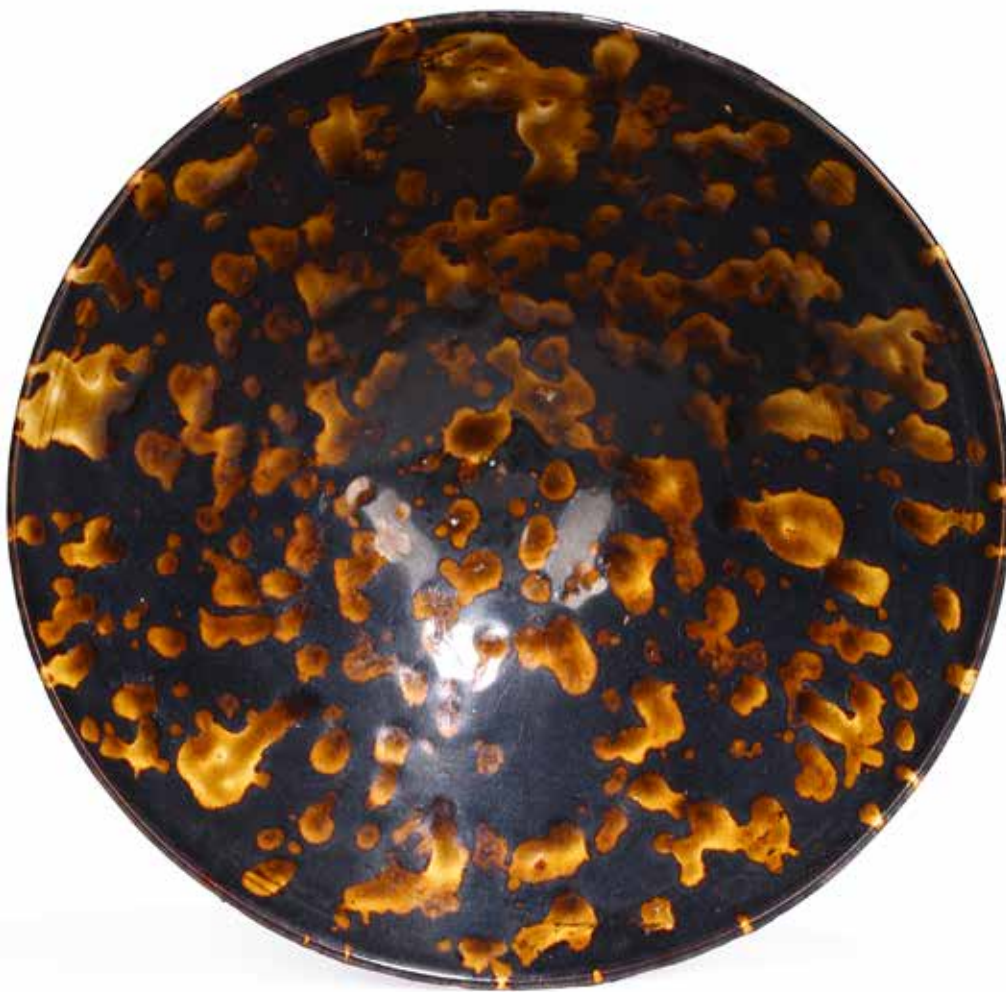
Property from an important
Northern California collection

宋 磁州窯花卉紋大瓶

來源:

北加州重要私人收藏





1277

A JIZHOU 'TORTOISE SHELL' BOWL

Covered inside and out with a rich dark brown glaze and liberally splashed in orange brown tones in imitation of tortoiseshell, the glaze stopping short of the knife-pared foot. Song Dynasty period.

Height: 2 1/4 in (5.7 cm) Width: 6 1/4 in (15.9 cm)

\$1200-1800

Provenance:

Property from an important Northern California collection

宋 吉州窯玳瑁盞

來源:

北加州重要私人收藏

1278

A CHINESE CIZHOU CUT-SLIP VASE

The body decorated with rows of oblique striations cut through a dark brown slip, all under a clear thin brown glaze, base unglazed.

Height: 7 in (17.8 cm) Width: 5 in (12.7 cm)

\$800-1200

Provenance:

Property from an important Northern California collection

磁州窯跳刀紋瓶

來源:

北加州重要私人收藏



1279

A CIZHOU SGRAFFIATO FLORAL VASE

The vase carved around the exterior through the brown and black glaze with a leafy scroll, all reserved on a white ground between stylised lotus lappet bands and floral scroll band.

Height: 11 in (27.9 cm) Width: 5 3/4 in (14.6 cm)

\$1500-2500

Provenance:

Property from an important Northern California collection

磁州窯花卉紋梅瓶

來源:

北加州重要私人收藏



1280

A CHINESE JUN WARE BOWL

The thickly potted body with rounded sided rising from a short tapering foot, the body covered in a thick lustrous sky-blue glaze thinning to mushroom tones at the mouth rim and irregularly stopping just above the foot, with a purple splash to the interior. Yuan/Ming Dynasty period.

Height: 3 in (7.6 cm) Width: 6 3/4 in (17.1 cm)

\$800-1200

Provenance:

Property from an important Northern California collection

元/明 钧窑碗

來源:

北加州重要私人收藏



1281

A CHINESE JUN WARE BOWL

The bowl with incurving mouth-rim and covered inside and out with a thick lavender-blue glaze thinning to a mushroom hue towards the extremities, with a purple splash to interior, the glaze on the exterior stops unevenly at foot to expose the buff stoneware. Yuan/Ming Dynasty period.

Height: 3 3/8 in (8.6 cm) Width: 6 3/4 in (17.1 cm)

\$800-1200

Provenance:

Property from an important Northern California collection

元/明 钧窑碗

來源:

北加州重要私人收藏



1282

A CHINESE JUN WARE BOWL

With rounded sides and a short straight foot, covered inside and out with a thick glaze of pale milky blue tone, with an irregularly-shaped splash of purple swirl at the interior. Yuan/Ming Dynasty period.

Height: 3 1/8 in (7.9 cm) Width: 7 1/2 in (19.1 cm)

\$800-1200

Provenance:

Property from an important Northern California collection

元/明 钧窑碗

來源:

北加州重要私人收藏



1283

A CHINESE JUN WARE BOWL

The thickly potted body with rounded sided rising from a short tapering foot, the body covered in a thick lustrous sky-blue glaze thinning to mushroom tones at the mouth rim and irregularly stopping just above the foot, with a purple splash to the interior. Yuan/Ming Dynasty period.

Height: 2 3/4 in (7.0 cm) Width: 7 1/8 in (18.1 cm)

\$800-1200

Provenance:

Property from an important Northern California collection

元/明 钧窑碗

來源:

北加州重要私人收藏



1284

A CHINESE JUN WARE BOWL

With rounded sides and a short straight foot, covered inside and out with a thick glaze of pale milky blue tone, with an irregularly-shaped splash of purple swirl at the interior. Yuan/Ming Dynasty period.

Height: 3 1/4 in (8.3 cm) Width: 6 1/2 in (16.5 cm)

\$800-1200

Provenance:

Property from an important Northern California collection

元/明 钧窯碗

來源:

北加州重要私人收藏



1285

A CHINESE AMBER GLAZED 'DOUBLE FISH' FLASK

Modeled after a leather prototype, the body moulded and incised with a double fish motif, all under a rich amber glaze stopping around the base to reveal the pale slip and buff pinkish clay. Liao Dynasty period.

Height: 10 3/4 in (27.3 cm) Width: 6 1/2 in (16.5 cm)

\$800-1200

Provenance:

Property from an important Northern California collection

遼 黃釉雙魚紋皮囊壺

來源:

北加州重要私人收藏





1286

A LARGE LONGQUAN CELADON TRIPOD CENSER

The bombé-form body is raised on three cabriole legs and carved with florets within a geometric design below waist neck. It is covered overall with a crackled glaze of sea-green tone with the exception of the unglazed center of the interior and the protruding rounded center of the base. Ming Dynasty period.

Height: 6 3/4 in (17.1 cm) Width: 14 1/8 in (35.9 cm)

\$2500-3500

Provenance:

Property from an important Northern California collection

明 大型龍泉青釉三足爐

來源:

北加州重要私人收藏



1287

A LONGQUAN CELADON TRIPOD CENSER

The cylindrical body is raised on three bracket feet and is incised on the exterior with clouds within geometric design. The censer is covered with a sea-green glaze, with the interior and exterior base partially unglazed. Yuan/Early Ming Dynasty period.

Height: 3 3/4 in (9.5 cm) Width: 5 1/4 in (13.3 cm)

\$800-1500

Provenance:

Property from an important Northern California collection

元/明初 龍泉青釉三足爐

來源:

北加州重要私人收藏





1288

A JIAN BLACK GLAZED 'OIL SPOTS' BOWL

With rounded sides resting on a short foot, covered overall with a lustrous black glaze decorated with large purplish silver oval shaped 'oil spots', the glaze stopping short of the lower body and foot, revealing the knife pared brown color body. Song Dynasty period.

Height: 3 1/4 in (8.3 cm) Width: 7 in (17.8 cm)

\$1200-1800

Provenance:

Property from an important Northern California collection

宋 建窯黑釉油滴盞

來源:

北加州重要私人收藏



1289

A LONGQUAN CELADON GUAN TYPE CENSER

The censer is potted with a compressed globular body, flared rim, and is flanked by a pair of inverted dragon handles. The vessel is covered all over in a greyish blue-green glaze suffused with dark and light brown crackle. Yuan/Ming Dynasty period.

Height: 3 1/4 in (8.3 cm) Width: 6 1/2 in (16.5 cm)

\$1500-2500

Provenance:

Property from an important Northern California collection

元/明 龍泉哥窯雙耳爐

來源:

北加州重要私人收藏





1290

A BLUE AND WHITE 'SCHOLAR' TRIPOD CENSER

The cylindrical censer is painted on the exterior with seated scholar and his attendant carrying Qin in a garden scene, all below a moulded band and double coin motifs band, all raised on three splayed legs painted with floral motifs. The underside of the base is unglazed except for the outermost ring. Ming Dynasty period, 15th century.

Height: 2 3/4 in (7.0 cm) Width: 4 3/4 in (12.1 cm)

\$2800-3800

Provenance:

1. Property from an important Northern California collection
2. Beijing Poly Auction, Lot 6219, December 2016

明成化 青花高士圖三足爐

來源:

1. 北加州重要私人收藏
2. 北京保利2016年12月 Lot 6219



1291

A CHINESE GE-TYPE CONG VASE

The archaistic cong style vase suffused with black craquelure applied overall opaque creamy-gray glaze. Ming Dynasty period.

Height: 5 in (12.7 cm) Width: 1 7/8 in (4.8 cm)

\$1000-2000

Provenance:

Property from an important Northern California collection

明 哥釉琮式瓶

來源:

北加州重要私人收藏



1292

A CHINESE GE-TYPE BOTTLE VASE

Raised on a slightly tapering ring foot, covered overall with a grey glaze suffused with a network of black crackle, wood stand. Ming Dynasty period.

Height: 6 1/4 in (15.9 cm) Width: 3 3/4 in (9.5 cm)

\$3000-5000

Provenance:

Property from an important Northern California collection

明 哥釉膽瓶 帶座

來源:

北加州重要私人收藏



1293

A CHINESE JUN-STYLE LOBED BOWL

The deep, rounded sides are molded as eight petals that rise from the small ring foot to the barbed rim, and are covered inside and out with purplish-blue color.

Height: 3 5/8 in (9.2 cm) Width: 7 1/2 in (19.1 cm)

\$600-900

Provenance:

Property from an important Northern California collection

鈞釉葵口碗

來源:

北加州重要私人收藏



1294

A LONGQUAN CELADON DOUBLE FISH BOWL

The center of the interior moulded with two fish, the exterior with petal ribs, all under olive green glaze thinning at the rims and stopping neatly around the foot. Ming Dynasty period.

Height: 1 7/8 in (4.8 cm) Width: 5 5/8 in (14.3 cm)

\$1000-2000

Provenance:

Property from an important Northern California collection

明 龍泉青釉雙魚碗

來源:

北加州重要私人收藏



1295

A PAIR OF CHINESE GE-TYPE BOWLS

The bowl of deep rounded rising to a slightly flared rim covered inside and out with an attractive greyish glaze suffused with crackle joined by faint gold tone crackle. The foot rimressed in a dark brown wash. Ming or Qing Dynasty period.

Height: 2 3/4 in (7.0 cm) Width: 7 3/4 in (19.7 cm)

\$800-1200

Provenance:

Property from an important Northern California collection

明/清 哥窯開片紋碗一對

來源:

北加州重要私人收藏



1296

A LONGQUAN CELADON LOBED BOWL

With the fluted sides rising from a straight foot, covered overall with a greyish-green glaze, the top rim and foot ring dressed in brown. Yuan/Ming Dynasty period.

Height: 2 1/4 in (5.7 cm) Width: 5 in (12.7 cm)

\$1500-2000

Provenance:

Property from an important Northern California collection

元/明 龍泉青釉葵口碗

來源:

北加州重要私人收藏



1297

A SMALL CHINESE FLAMBE GLAZE VASE

Covered overall with a vibrant mixed glaze of cream, red, green, and dark blue glaze, wood stand. Qing Dynasty period.

Height: 3 7/8 in (9.8 cm) Width: 3 in (7.6 cm)

\$1200-1800

Provenance:

Property from an important Northern California collection

清中期 窯變釉小瓶 帶座

來源:

北加州重要私人收藏



1298

A LARGE CHINESE FAMILLE NOIRE SQUARE FORM VASE

The tapering sides divided into four facets, each decorated with scene of a lady in outdoor garden, the neck further painted with boys playing hide and seek. Base inscribed with four character Kangxi mark. Qing Dynasty period.

Height: 23 3/4 in (60.3 cm) Width: 7 1/4 in (18.4 cm)

\$3000-5000

Provenance:

Property from an important Northern California collection

清 墨地素三彩仕女人物瓶

來源:

北加州重要私人收藏



1299

A LARGE BLUE AND WHITE BOMBE TRIPOD CENSER

Of compressed globular form and supported on three short mythical beast-mask feet, decorated on the exterior with floral roundels, clouds, and floral sprays, the underside left unglazed. Qing Dynasty period.

Height: 5 1/2 in (14.0 cm) Width: 12 in (30.5 cm)

\$2500-3500

Provenance:

Property from an important Northern California collection

清 青花團花紋三足大香爐

來源:

北加州重要私人收藏





1300

A CHINESE BLUE AND WHITE LOTUS FLORAL BOWL

The bowl exterior with stylized lotus flower scrolls above three concentric lines and lappets, the interior inscribed with six character Xuande mark.

Height: 2 5/8 in (6.7 cm) Width: 7 in (17.8 cm)

\$800-1200

Provenance:

Property from an important Northern California collection

宣德款 青花纏枝蓮花紋碗

來源:

北加州重要私人收藏





1301

A BLUE AND WHITE 'LANDSCAPE' VASE

The vase decorated with cartouches enclosing landscape scene to the front and back and both sides, the neck flanked by pair of elephant handles, base inscribed with reign mark. Qing Dynasty period.

Height: 6 3/4 in (17.1 cm) Width: 4 1/2 in (11.4 cm)

\$1000-1500

Provenance:

Property from an important Northern California collection

清 康熙年制款 青花開光人物山水瓶

來源:

北加州重要私人收藏



1302

A FAMILLE ROSE AND BLUE AND WHITE VASE

Of compressed globular formed body, decorated with two shaped cartouches enclosing insects, in between with dense lotus scrolls reserved on red ground, the cylindrical neck decorated with lotus scrolls in blue and white and picked out in gilt, base inscribed with mark. 20th century.

Height: 5 5/8 in (14.3 cm) Width: 4 in (10.2 cm)

\$1000-1500

Provenance:

Property from an important Northern California collection

青花粉彩纏枝蓮瓶

來源:

北加州重要私人收藏



1303

A CHINESE TURQUOISE GLAZED VASE

The pear-shaped body supported on a splayed foot rising to a tall flared neck flanked by elephant head handles on each side, applied overall with a bright translucent turquoise glaze, base incised with apocryphal kangxi mark. Qing Dynasty period.

Height: 12 in (30.5 cm) Width: 8 in (20.3 cm)

\$800-1200

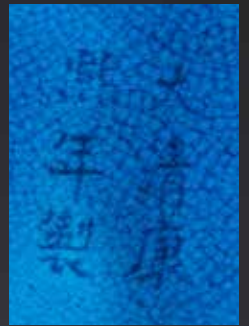
Provenance:

Property from an important Northern California collection

清 孔雀藍釉象耳瓶

來源:

北加州重要私人收藏





1304

A PAIR OF CHINESE YELLOW GLAZED GLOBULAR VASES

The ovoid body supported on a slightly spreading foot and rising to a slender waisted neck and flared rim, covered overall in a deep yellow glaze, the base glazed in white. Qing Dynasty period.

Height: 13 1/2 in (34.3 cm) Width: 8 in (20.3 cm)

\$3800-5800

Provenance:

Property from an important Northern California collection

清 黃釉天球瓶一對

來源:

北加州重要私人收藏

1305

TWO FAMILLE ROSE 'FIGURES' MOONFLASK VASES

Each flattened moonflask decorated with figures on the circular body, the base inscribed with apocryphal qianlong mark. Republic period.

Height: 17 1/2 in (44.5 cm) Width: 12 in (30.5 cm)

\$600-900

Provenance:

Property from an important Northern California collection

民國 粉彩人物抱月瓶 兩尊

來源:

北加州重要私人收藏



1306

A PAIR OF CELADON CARVED 'LOTUS' LANTERN VASES

Each vase is of lantern-shaped on a short straight foot, the neck slightly flared, the body carved with lotus scrolls in between ruyi shaped band around the shoulder and lappet around the foot, the base inscribed with six character yongzheng mark and drilled at the center, all covered overall in a glossy celadon glaze. Qing Dynasty period.

Height: 11 1/2 in (29.2 cm) Width: 5 1/2 in (14.0 cm)

\$1500-2500

Provenance:

Property from an important Northern California collection

清 青釉暗刻纏枝蓮紋燈籠瓶一對

來源:

北加州重要私人收藏





1307

A BLUE AND WHITE DRAGONS INSCRIBED JARDINIÈRE

Of cylindrical form, the body painted in cobalt blue with pair of five clawed dragons amidst flame and clouds flanking an inscription within a pagoda shaped cartouche with donor's name, the date and year, dedicated to worship of Guanyin.

Height: 10 3/8 in (26.4 cm) Width: 11 3/4 in (29.8 cm)

\$2000-3000

Provenance:

Property from an important Northern California collection

清 青花雲龍發願文缸

來源:

北加州重要私人收藏



1308

A GILT PAINTED CORAL RED GROUND BOTTLE VASE

The rounded body rising to straight neck and flared mouth, decorated with three roundels enclosing landscape in famille rose, all reserved on coral red ground with gilt decorative patterns, base inscribed with four character mark. Circa 1915-1916.

Height: 7 in (17.8 cm) Width: 4 1/2 in (11.4 cm)

\$1000-2000

Provenance:

Property from an important Northern California collection

洪憲 居仁堂製款 紅釉泥金開光山水紋瓶

來源:

北加州重要私人收藏



1309

A CHINESE FLAMBE GLAZED BOTTLE VASE

The vase decorated with peachbloom red glaze around the neck and blue and red glaze around the body. Qing Dynasty period.

Height: 6 3/4 in (17.1 cm) Width: 4 1/2 in (11.4 cm)

\$1500-2500

Provenance:

Beverly Antiques, Beverly Hills, California. Property from an important Northern California collection

清 窯變釉長頸碗

來源:

南加州比弗利古董, 北加州重要私人收藏



1310

A BLUE AND WHITE 'DRAGON' JAR

The jar painted with a four clawed dragon around the body, shoulder surmounted with three lug handles. Ming Dynasty period.

Height: 11 3/4 in (29.8 cm) Width: 9 in (22.9 cm)

\$200-300

Provenance:

Property from an important Northern California collection

明 青花龍紋三系罐

來源:

北加州重要私人收藏





1311

A CHINESE GE-TYPE MEIPING VASE

The body tapering from high rounded shoulder to the gently spreading foot, covered on the exterior with crackle patterns over white glaze.

Height: 11 3/4 in (29.8 cm) Width: 7 1/2 in (19.1 cm)

\$800-1200

Provenance:

Property from an important Northern California collection

哥釉開片紋梅瓶

來源:

北加州重要私人收藏



1312

A FAMILLE ROSE 'DREAM FROM RED CHAMBER' DISH

The plate decorates with various figures from the novel the dream from red chamber, base with apocryphal mark. Republic period.

Height: 2 1/8 in (5.4 cm) Width: 10 5/8 in (27.0 cm)

\$500-800

Provenance:

Property from an important Northern California collection

民國 紅樓夢人物盤

來源:

北加州重要私人收藏



1313

A PAIR OF FAMILLE ROSE 'FIGURES' PLATES

Both decorated with a male and female figure indoor and outdoor setting, the base inscribed with Qianlong mark. Republic period.

Height: 1 1/2 in (3.8 cm) Width: 9 1/2 in (24.1 cm)

\$800-1200

Provenance:

Property from an important Northern California collection

民國 粉彩人物故事圖盤一對

來源:

北加州重要私人收藏



1314

A PAIR OF REVERSE DECORATED BLUE AND WHITE DRAGON CUPS

Each cup reverse decorated with pair of dragons chasing flaming pearl, the base inscribed with Guangxu reign mark. Qing Dynasty period.

Height: 1 1/8 in (2.9 cm) Width: 2 1/2 in (6.3 cm)

\$3000-5000

清光緒 青花龍紋杯

來源:

北加州重要私人收藏





1315

A BRONZE AND CLOISONNE ENAMEL GU VASE

Modelled in the form of archaistic bronze gu, decorated with band of foliage scroll in cloisonne enamel to the middle section, inlaid with agate beads, further decorated with bands of lotus scrolls in relief to the top and base. Republic period.

Height: 12 in (30.5 cm) Width: 7 5/8 in (19.4 cm)

\$600-900

Provenance:

Property from an important Northern California collection

民國 銅景泰藍花觚瓶

來源:

北加州重要私人收藏

1316

TWO CHINESE ARCHAISTIC JADE VESSELS

Consisted of a green jade washer flanked by pair of handles suspended with loose rings; and a celadon jade archaistic boat-shaped vessel. Qing Dynasty period.

Height: 1 5/8 in (4.1 cm) Width: 4 7/8 in (12.4 cm)

\$600-900

Provenance:

Property from an important Northern California collection

清 仿古玉碗兩件

來源:

北加州重要私人收藏



1317

A KOREAN SLIP DECORATED CELADON VASE

The waisted lower body rising to a broad shoulder surmounted by a small neck and cupped rim, the sides carved with roundels inclosing chrysanthemum spray and cranes and clouds in the spaces between the roundels, covered overall in a translucent olive-colored glaze.

Height: 11 1/4 in (28.6 cm) Width: 7 3/4 in (19.7 cm)

\$300-500

Provenance:

Property from an important Northern California collection

高麗青瓷梅瓶

來源:

北加州重要私人收藏



1318

A CELADON GLAZE VASE WITH FIX HANDLES

Of pear Shaped, rising from a short foot to a columnar neck and an everted rim, set with a pair handles suspending mock rings, covered overall in celadon glaze. Ming Dynasty period.

Height: 9 in (22.9 cm) Width: 5 1/2 in (14.0 cm)

\$800-1200

Provenance:

Property from an important Northern California collection

明 青釉雙耳環瓶

來源:

北加州重要私人收藏





1319

A SMALL PEACHBLOOM RED GLAZE WASHER

The exterior overall covered with a glaze of soft rose color suffused with pale green speckles, the base inscribed with reign mark. Republic period.

Height: 2 in (5.1 cm) Width: 3 in (7.6 cm)

\$800-1200

Provenance:

Property from an important Northern California collection

民國 豇豆紅小洗

來源:

北加州重要私人收藏



1320

A RARE RED AGATE RETICULATED TRIPOD CENSER

The lobed form tripod censer supported on three mughal style feet, the body flanked by pair of mythical beast heads suspended with loose rings, the reticulated cover surmounted with a flared finial decorated with four small mythical beast handles suspended with rings.

Height: 7 in (17.8 cm) Width: 8 5/8 in (21.9 cm)

\$4000-6000

Provenance:

Property from an important Northern California collection

南紅瑪瑙鏤空活環三足蓋爐

來源:

北加州重要私人收藏



1321

A KOREAN CELADON SLIP DECORATED 'CRANE' JAR

The jar exterior decorated with crane and stylized clouds between lappets around shoulder and dot and double lines around the lower body.

Height: 7 1/2 in (19.1 cm) Width: 6 1/2 in (16.5 cm)

\$300-500

Provenance:

Property from an important Northern California collection

高麗青瓷雲鶴紋罐

來源:

北加州重要私人收藏



1322

A LAVENDER JADEITE 'CABBAGE' CARVING

The gnarled and pitted leafy vegetable head surmounted by a small insect, the stone of lavender tone with russet and brown streaks and inclusions, with silver wire inlay wood stand.

Height: 7 1/2 in (19.1 cm) Width: 9 1/4 in (23.5 cm)

\$5000-8000

Provenance:

Property from an important Northern California collection

紫羅蘭翡翠白菜(百財)擺件

來源:

北加州重要私人收藏





1323

A CHINESE AGATE WASHER WITH FROG HANDLES

The lobed agate washer carved with a pair of frog form handles. Tang Dynasty period or later.

Height: 2 in (5.1 cm) Width: 7 1/2 in (19.1 cm)

\$4000-6000

Provenance:

Property from an important Northern California collection

唐或以後 瑪瑙蛙耳盤

來源:

北加州重要私人收藏

1324

A CHINESE AGARWOOD CARVED WALL VASE

The wall vase in form of gnarled trunk, carved to the front in relief with a rectangular panel enclosing gilt inscribed poem and two seal marks, surrounded by pines and bamboo, carved agarwood stand. 18th century, Qing Dynasty period.

Height: 7 7/8 in (20.0 cm) Width: 8 1/2 in (21.6 cm)

\$3000-5000

Provenance:

Property from an important Northern California collection

清 十八世紀 沉香木禦提詩掛瓶 帶座

來源:

北加州重要私人收藏



1325

FIVE JADE AND HARDSTONE ARCHER'S RINGS

Consisted of one black hardstone archer's ring, three mottled green and russet jade archer's rings, and one white jadeite archer's rings. Ming or Qing Dynasty period.

Height: 1 1/4 in (3.2 cm) Width: 1 1/2 in (3.8 cm)

\$300-500

Provenance:

Property from an important Northern California collection

明/清 各式玉, 翡翠扳指五只

來源:

北加州重要私人收藏



1326

FIVE JADE AND JADEITE ARCHER'S RINGS

Consisted of four jadeite hardstone archer's rings, and one russet jade archer's ring. Ming or Qing Dynasty period.

Height: 1 1/4 in (3.2 cm) Width: 1 3/8 in (3.5 cm)

\$300-500

Provenance:

Property from an important Northern California collection

明/清 各式玉, 翡翠扳指五只

來源:

北加州重要私人收藏



1327

FOUR JADE AND JADEITE ARCHER'S RINGS

Consisted of a jadeite hardstone archer's ring carved in relief with leafy peach, two mottled black and russet jade archer's ring, and one white jade archer's ring. Ming/Qing Dynasty period.

Height: 1 1/4 in (3.2 cm) Width: 1 1/2 in (3.8 cm)

\$300-500

Provenance:

Property from an important Northern California collection

明/清 各式玉, 翡翠扳指四只

來源:

北加州重要私人收藏



1328

FOUR JADE AND JADEITE ARCHER'S RINGS

Consisted of a mottled green and white hardstone archer's ring carved in relief with auspicious bats and coin; a white jade archer's ring ; a celadon jade archer's ring; and a mottled black and white archer's ring. Ming or Qing Dynasty period.

Height: 1 in (2.5 cm) Width: 1 1/4 in (3.2 cm)

\$300-500

Provenance:

Property from an important Northern California collection

明/清 各式玉, 翡翠扳指四只

來源:

北加州重要私人收藏



1329

FIVE JADE AND HARDSTONE ARCHER'S RINGS

Height: 1 1/8 in (2.9 cm) Width: 1 3/8 in (3.5 cm)

\$300-500

Provenance:

Property from an important Northern California collection

明/清 各式玉, 翡翠扳指五只

來源:

北加州重要私人收藏



1330

A CELADON JADE SEAL AND SNUFF BOTTLE

Consisted of a rectangular sectioned jade seal surmounted with a mythical beast ; a jade snuff bottle with 'ruyi' designs. Qing Dynasty period.

Height: 3 in (7.6 cm) Width: 2 3/4 in (7.0 cm)

\$200-300

Provenance:

Property from an important Northern California collection

清 青白玉印章, 鼻煙壺

來源:

北加州重要私人收藏



1331

A LARGE BLUE AND WHITE 'DRAGON AND LOTUS' VASE

The pear-shaped body rising from a short spreading foot to a short waisted flaring neck flanked by chalong handles, painted around the exterior in rich cobalt-blue tones with a sinuous five clawed ferocious dragons amidst lotus scrolls, all between ruyi, lotus-lappet bands, and borders of waves at the rim and the base, with four character reign mark at the base. Qing Dynasty period.

Height: 17 in (43.2 cm) Width: 13 1/2 in (34.3 cm)

\$8000-12000

Provenance:

Property from an important Northern California collection

清 青花纏枝蓮龍紋螭龍耳尊

來源:

北加州重要私人收藏





1332

A FAMILLE ROSE 'CHRYSANTHEMUM AND ROCKS' VASE

The pear-shaped body sweeping up from a gently splayed foot to a tall waisted neck and a garlic-mouth, finely painted with rocks and chrysanthemum, the base inscribed with apocryphal Qianlong mark. Republic period.

Height: 17 in (43.2 cm) Width: 9 in (22.9 cm)

\$2000-3000

民國 粉彩洞石菊花紋蒜頭瓶



1333

A BLUE AND WHITE UNDERGLAZED RED 'DRAGONS' BOWL

decorated around the body with a continuous composition dragons chasing flaming pearl in blue and white and underglaze red, base unglazed. Qing Dynasty period.

Height: 5 1/2 in (14.0 cm) Width: 11 in (27.9 cm)

\$2000-3000

清 青花釉裏紅雲龍紋鉢

圓口，弧腹，臥足。外壁施青花釉裏紅繪「雲龍紋」，青花髮色濃豔深沉，釉裏紅髮色為暗紅色。繪畫技法嫺熟，所繪雲龍極其生動，龍形威武，龍首須發飄揚，鱗甲清晰，四肢伸張，呼之欲出，氣勢非凡。



1334

A LARGE CHINESE GE-TYPE HU VASE

The vase is made in imitation of Song dynasty Ge ware with a faceted body, a pair of lug handles, and is covered overall with a glaze of pale bluish-grey color suffused with dark grey crackle, the unglazed bottom of the foot is covered with a brown dressing. Qing Dynasty period.

Height: 12 in (30.5 cm) Width: 8 in (20.3 cm)

\$1500-2500

清 大型哥釉開片壺瓶



1335

A CHINESE FAMILLE VERTE FIGURES JAR

Stoutly potted in baluster form, painted around the exterior with a continuous garden scene of depicting boys playing in an outdoor setting; scholars appreciating scenery in a pavilion; and beautiful maidens engaged in leisurely pursuits, all below a band at the collar and flower sprays at the neck. Qing Dynasty period.

Height: 14 in (35.6 cm) Width: 11 in (27.9 cm)

\$2500-3500

清康熙 五彩侍女人物紋大罐

圓口，直頸，鼓腹下收，圈足，帶紅木蓋。施五彩，以紅、綠、黃、黑、赭等多色搭。



1336

A FAMILLE ROSE 'RAMS' INSCRIBED JAR

The globular body painted with three rams in a garden setting and four characters and two seal marks. The base inscribed with six character Guangxu mark. Qing Dynasty period.

Height: 5 1/2 in (14.0 cm) Width: 4 1/2 in (11.4 cm)

\$400-600

清光緒 粉彩三陽開泰蘋果尊

本器因形似蘋果，故稱「蘋果尊」。器身飽滿，小巧怡人，小口外奢，卷肩，圓腹，臥足。器身繪「三陽開泰」「山石」「蘭草」等，刻畫清晰，生動傳神，色彩豔麗豐富。

「大清光緒年制」款識。



1337

A CHINESE FAMILLE ROSE 'FIGURES' DISH

The interior finely painted with four prominent historical figures with associated name and praise next to it, the center further painted with a couple in a pavilion, the underside base inscribed with apocryphal reign mark. Qing Dynasty period.

Height: 2 in (5.1 cm) Width: 9 3/4 in (24.8 cm)

\$600-900

清 粉彩無雙譜人物紋盤

圓口，折腰，圈足。器身施粉彩繪人物，人物神態各異，神情生動，衣紋自然清晰。用墨彩書寫詩文，筆法老道，蒼穹有力。





1338

A LARGE CHINESE WUCAI 'FIGURES' JAR

The broad baluster-form body painted with a continuous scene of elegant ladies watching over small boy at play in a grand garden setting, the base unglazed. Late Qing Dynasty period or Republic period.

Height: 16 in (40.6 cm) Width: 14 in (35.6 cm)

\$600-900

清 五彩人物紋大罐

微撇口，直頸，鼓腹下收，圈足。器形碩大恢宏，端正莊嚴，極具震撼力。器身施五彩繪人物故事圖，繪「人物」「山石」「松樹」「蘭草」「芭蕉」。所繪女子面容端莊清秀，體態纖麗修長，氣質高雅恬靜，宛若天仙。整器紋飾運筆大氣流暢，精工古雅，色彩古拙厚重，豔而不俗。

1339

A PAIR OF CHINESE FAMILLE ROSE 'IMMORTALS' BOWLS

Chinese. Each painted on the exterior with the Eight Immortals carrying their respective attributes, the interior with a medallion enclosing the shoulao and his crane, the base painted with a leaf. Qing Dynasty period.

Height: 2 1/2 in (6.3 cm) Width: 5 7/8 in (14.9 cm)

\$600-900

清 粉彩八仙碗一對



1340
A CHINESE BLUE AND WHITE ENAMEL 'LOTUS'
DISH

Chinese. Each painted with lotus blooms borne on stylised foliage, the base inscribed with six character Guangxu mark.

Height: 1 1/4 in (3.2 cm) Width: 6 7/8 in (17.5 cm)

\$500-800

清光緒 青花五彩蓮紋盤



1341
A PAIR OF FAMILLE ROSE 'AUSPICIOUS CHARACTERS' BOWLS

Chinese. Each bowl is painted around the body with four medallions characters 'Jixiang Ruyi' in auspicious meaning, between auspicious bats suspending chime and lotus, all reserved on turquoise green ground, the base inscribed with six character Jiaqing mark. Qing Dynasty period.

Height: 2 1/2 in (6.3 cm) Width: 4 1/4 in (10.8 cm)

\$1000-2000

清 粉彩松石綠吉祥如意碗一對



1342

A PAIR OF FAMILLE ROSE 'BUTTERFLIES' BOWLS

Chinese. The faceted body finely painted around with various butterflies amidst leafy flowers, top rim painted in gilt, the base inscribed with four character mark. Qing Dynasty period.

Height: 2 1/2 in (6.3 cm) Width: 4 in (10.2 cm)

\$1000-2000

清 粉彩蝴蝶碗一對



1343

A CHINESE FAMILLE ROSE 'EIGHT IMMORTALS' BOWL

Chinese. Painted on around the body with the eight immortal figures from Chinese mythology, all reserved on turquoise green ground, the base inscribed with six character Jiaqing mark. Qing Dynasty period, 18th century.

Height: 3 1/4 in (8.3 cm) Width: 5 1/8 in (13.0 cm)

\$600-900

清嘉慶 粉彩松石綠釉八仙人物碗





1344
A CHINESE FAMILLE ROSE
'FLOWERS' THREE TIER BOX

Chinese. Each circular-section tier painted in famille rose with flowers, the domed cover further decorated with birds and flowers. Qing Dynasty period.

Height: 6 in (15.2 cm)
 Width: 8 1/4 in (21.0 cm)

\$600-900

清光緒 淺降彩花鳥三層蓋盒



1345
A CHINESE QIANJIANG 'FLOWERS'
INSCRIBED FOUR TIER BOX

Chinese. Each circular-section tier applied with moulded mythical beast head handles and painted in Qianjiang enamel with flowers or inscriptions, the domed cover inscribed and dated, and set with a metal handle. Republic period, circa 1928.

Height: 9 in (22.9 cm) Width: 8 1/4 in (21.0 cm)

\$600-900

民國 淺降彩花鳥四層蓋盒





1346

A CHINESE WHITE JADE BOWL AND STAND

The deep U-shaped bowl with thin sides rising to slightly flared mouth rim, supported on short foot rim, set with a matching cover, the stone is of even translucent white tone.

Height: 4 in (10.2 cm) Width: 4 in (10.2 cm)

\$2500-3500

清 白玉茶碗

1347

A WHITE JADE DRAGON RETICULATED FINIAL

Carved in openwork with dragon with horns and manes, emerging from a dense ground of intertwining stems and foliage, the underside pierced with four pairs of holes for attachment. Ming Dynasty period.

Height: 2 in (5.1 cm) Width: 2 1/4 in (5.7 cm)

\$1000-2000

明 白玉雕龍擺件



1348

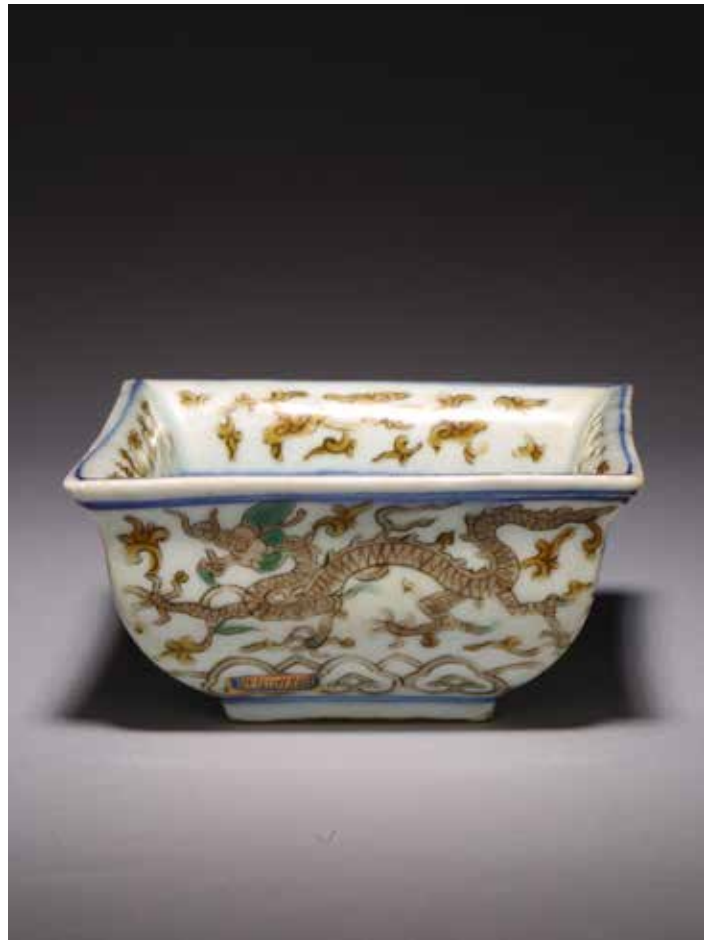
**A BROWN AND GREEN ENAMEL SQUARE
'DRAGON' BOWL**

Of square section, the slightly rounded flaring sides rising from a short tapering foot to an everted rim, painted to each side with a phoenix soaring amidst floral sprays, the interior decorated with a dragon within a double square to the centre, the base with a six-character Jiajing mark in underglaze blue. Ming Dynasty Jiajing mark.

Height: 2 1/2 in (6.3 cm) Width: 5 in (12.7 cm)

\$1000-2000

明嘉靖 褐綠釉龍紋方盃



1349

**A CHINESE RED GLAZED BRUSHPOT
WITH KANGXI MARK**

Of cylindrical form, the exterior covered in a raspberry-red glaze stopping neatly at the foot, the interior glazed white, the base unglazed except the rim and center which inscribed with six character kangxi mark.

Height: 6 1/2 in (16.5 cm)

Width: 7 1/4 in (18.4 cm)

\$800-1200

民國 康熙款 紅釉筆筒





1350

A FAMILLE ROSE RELIEF MOULDED 'ANTIQUES' BRUSHPOT

Decorated with a myriad of precious antique objects including against a white enamel moulded 'lattice' ground, interior and base covered in turquoise green ground, base inscribed with six character reign mark in relief. Qing Dynasty period.

Height: 5 7/8 in (14.9 cm) Width: 5 1/8 in (13.0 cm)

\$1000-1500

清 粉彩雕瓷博古紋筆筒



1351

A FAMILLE ROSE GILT PAINTED 'FLORAL' WALL VASE

The long curved vase elaborately painted with leafy flowers at the center, the tail painted with landscape scene within a cartouche, the wide mouth further decorated with similar leafy floral scrolls, the reverse inscribed with reign mark. Possibly of Qing Dynasty Qianlong period.

Height: 8 1/2 in (21.6 cm) Width: 4 1/2 in (11.4 cm)

\$1000-1500

民國 粉彩描金花卉山水紋掛瓶

1352

A CELADON GLAZED 'POMEGRANATE' VASE

The vase is finely potted with a globular body rising to a waisted neck that supports a flared mouth in the form of six barbed sepals, covered overall with pale bluish green glaze except for the unglazed foot ring, base inscribed with reign mark, accompanied with zitan stand. Qing Dynasty period.

Height: 7 in (17.8 cm) Width: 6 in (15.2 cm)

\$1000-1500

清 粉青釉石榴尊 配紫檀座



1353

A CHINESE FAMILLE VERTE 'IMMORTAL' BOWL

The thinly potted bowl is delicately decorated in iron-red, green, aubergine, black enamels depicting the figure of Kuixing in characteristic dynamic pose with one foot raised and holding a brush. The interior is plain. Base inscribed with reign mark.

Height: 1 1/2 in (3.8 cm) Diameter: 3 5/8 in (9.0 cm)

\$1200-1800

清 五彩魁星踢門紋碗

器型小巧可愛，圓口，淺腹，直圈足。胎質潔白，釉汁勻淨。五彩繪“魁星點門紋”，魁星雙眉緊鎖，怒髮沖天，他身穿網裙，飄帶纏繞期間，立於梅枝上，一手捧門，一腳向後翹起，一手執筆，意思是用筆點定中試人的姓名，神采飛揚，氣勢凌人。魁星有保佑科場及第，名列前茅，有科舉奪魁之意。
“大清雍正年制”款識。





1354
**A BLUE AND WHITE ENAMELLED
'BATS' DISH**

The interior enamelled in blue, green, red, and yellow to depict bats amidst lingzhi fungus sprays, the exterior similarly decorated, base inscribed with Tongzhi reign mark. Qing Dynasty period.

Height: 1 3/8 in (3.4 cm)
Diameter: 6 3/8 in (16.0 cm)

\$1200-1800

清同治 青花五彩雲蝠紋盤

圓口，淺腹，圈足，形制規矩，端莊古拙。青花五彩繪“雲蝠”“靈芝”等，蝙蝠翻飛於彩雲之間，隻隻不同，姿態各異，動感強烈，線條清晰。祥雲迤邐，明黃、淡綠、青花、褐彩、礬紅等裝點繽紛，絢麗異常，寓意洪福齊天。整器紋飾佈局規矩，繁而不亂，飄灑自然。
“同治年制”款識。



1355
**A CHINESE FAMILLE ROSE 'EIGHT
IMMORTALS' DISH**

The dish decorated to the interior with three immortals around a rock table in garden setting, the base with reign mark.

Height: 7/8 in (2.3 cm) Length: 5 1/8 in (13.0 cm)

\$1200-1800

民國 粉彩八仙紋碟

花型口，淺腹，圈足。胎體輕薄，胎質潔白，釉面光亮。口沿描金，粉彩繪“鐵拐李”“漢鍾離”“韓湘子”“松樹”“山石”等。人物神情各異，表情生動，蒼松枝幹遒勁，松葉翠綠，山石層次感豐富。
“大清咸豐年制”款識。



1356

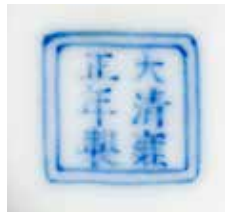
A CHINESE DOUCAI BOWL

Decorated to the exterior with stylized floral scrolls in between ruyi head band and lappet band around the foot. The base inscribed with apocryphal reign mark.

Height: 1 7/8 in (4.5 cm) Diameter: 3 2/8 in (8.2 cm)

\$800-1200

鬥彩花卉紋杯



1357

A CHINESE BLUE AND WHITE 'IMPERIAL POEM' TRAY

The shallow lobed sides of quatrefoil section, resting on four small incurved feet, decorated to the interior with a quatrefoil panel enclosing an imperial poem, set within a band of scrolling lotus and florets repeated on the interior and the exterior of the walls, the base inscribed with a six-character seal mark.

Height: 7/8 in (2.3 cm) Length: 6 3/8 in (16.0 cm) Width: 4 1/2 in (11.2 cm)

\$1500-2000

青花詩文纏枝花卉洗





1358

A PAIR OF GREEN ENAMEL YELLOW GROUND DISHES

Each incised and painted in green enamel against a yellow ground, the interior with dragons striding among clouds in pursuit of flaming pearls, the exterior with floral sprays.

Height: 1 3/8 in (3.2 cm)

Diameter: 5 5/8 in (14.0 cm)

\$1500-2000

民國 黃地綠彩龍紋盤一對



1359

A BLUE AND WHITE 'LANDSCAPE' JARDINIÈRE

The jardiniere has deep rounded sides and a lipped rim. It is decorated on the exterior with continuous mountainous and tree-lined riverscape scene, separated by stylized auspicious character.

Height: 7 1/2 in (18.8 cm)

Diameter: 9 3/8 in (23.8 cm)

\$1500-2000

青花山水人物紋缸

1360

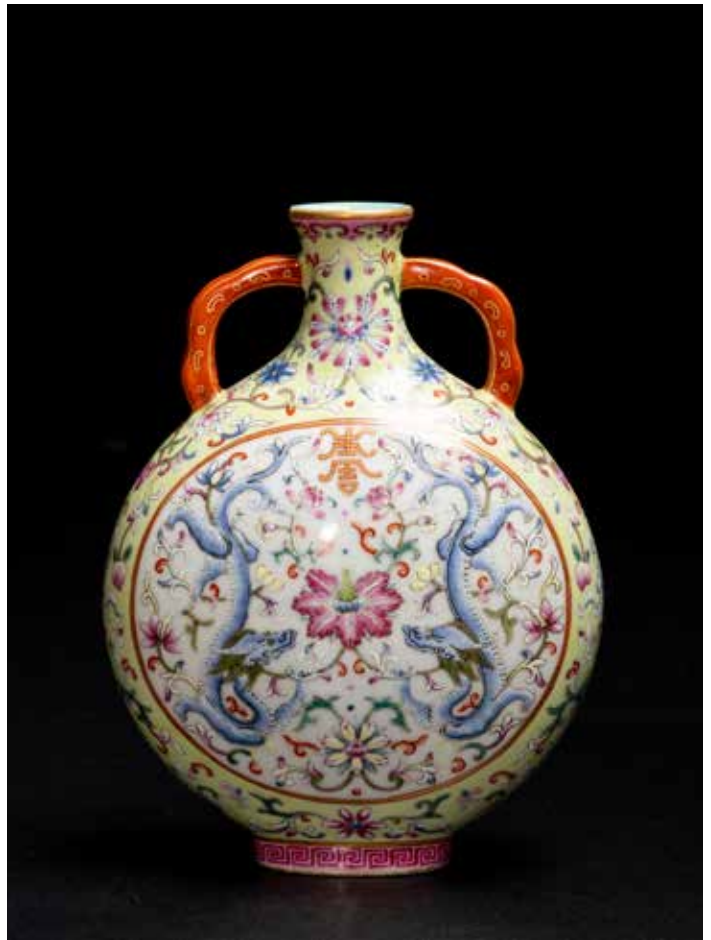
A FAMILLE ROSE 'DRAGONS' MOONFLASK

The body enameled with dragons pair and floral spray.
The base is inscribed in iron-red with an apocryphal
Qianlong seal mark. Qing Dynasty period.

Height: 6 7/8 in (17.6 cm) Diameter: 1 2/8 in (3.1 cm)

\$1500-2000

清 綠地洋彩雙龍抱月瓶



1361

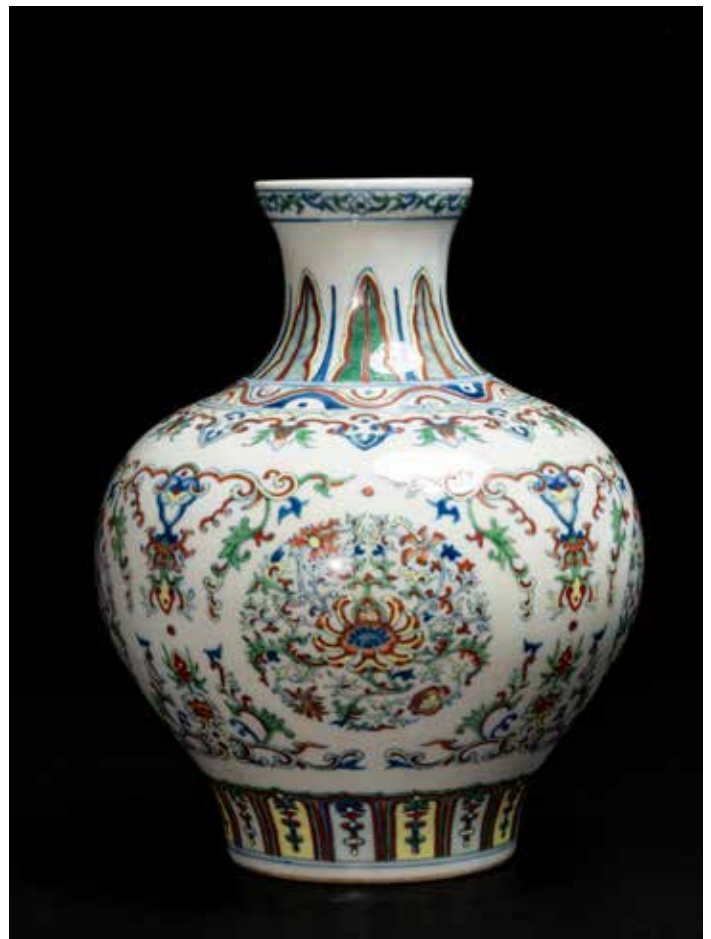
A CHINESE DOUCAI FLORAL VASE

Decorated around the body with stylized floral scrolls. The
base with apocryphal reign mark. Qing Dynasty period.

Height: 9 1/2 in (24.0 cm) Diameter: 2 7/8 in (7.3 cm)

\$1000-1500

清 鬥彩纏枝花卉紋尊





1362

A WHITE AND RUSSET JADE 'CHILONG' PENDANT

Carved in the form of pair of intertwining chilong, the stone is of polished white tone with russet areas. Qing Dynasty period.

Height: 2 7/8 in (7.1 cm) Length: 1 7/8 in (4.8 cm)

\$800-1200

清 白玉螭龍紋珮

玉質溫潤細膩，瑩潤光潔，局部帶有黑褐色沁色，包漿肥厚。螭龍雙耳貼腦，圓眼，闊嘴，身姿婉轉，線條流暢，自然生動，工藝精湛。



1363

A CHINESE FAMILLE VERTE 'STORY SCENE' DISH

Qing Dynasty period. With curving sides, the dish painted to the interior with four figures, including two elegant ladies, a monk, and a scholar literati within background of pavillion garden, next to wutong and rockworks, the green trellis-pattern border reserved with auspicious object motifs, the base bearing six character Kangxi mark.

Height: 2 in (5.1 cm) Length: 11 1/4 in (28.6 cm)

\$800-1200

清 五彩人物故事圖盤

敞口弧腹，平底圈足，以紅、黃、黑、深綠、淺綠、碧綠、翠藍、茄紫八色繪人物，繪畫工致精麗，生動傳神，色彩瑰麗多姿、濃艷奪目，人物刻畫傳神細緻。整體造型委婉有剛性，做工精緻富有力度，線條挺立，色階豐富，立體感強。

“大清康熙”年制。





1364

**A HARDSTONE INLAID 'FIGURES' EIGHT PANEL
HARDWOOD SCREEN**

Qing Dynasty Daoguang period. The center section of each panel inlaid in jade, agate, soapstone, quartz, aventurine, mother-of-pearl, cinnabar lacquer to depict eight story scenes including scholar toasting to the moon, scholar appreciating the chrysanthemum, scholar studying the inkstones, two immortals playing chess, etc, with inscription dating to seventeenth year of Daoguang reign (1837), each with lower panel depicting various birds and flowers, in between a hardwood panel with carved archaic pattern; the reverse painted with calligraphy inscriptions in clerical script.

Height: 75 1/2 in (191.8 cm) Length: 152 in (386.1 cm)

\$5000-8000

清道光 百寶嵌人物故事詩文紅木屏風八扇



1365

A GILT-BRONZE FIGURE OF GURU

Shown seated in dhyanasana on a double lotus throne, right hand raised holding a vajra, wearing dhoti with incised hems, face with intense expression, wearing pointed hat, overall richly gilt. Qing Dynasty period.

Height: 6 3/8 in (15.8 cm) Width: 4 3/8 in (11.2 cm)

\$2000-3000

清 銅鎏金上師像



1366

A CLOISONNE ENAMEL 'MELON' CIRCULAR BOX

Of circular form, the box enamelled with two large melons and fruits borne on leafy branches, the side decorated with lotus scrolls, the base with four character Qianlong mark, all reserved on turquoise ground.

Height: 1 3/4 in (4.4 cm)

Diameter: 4 3/4 in (12.1 cm)

\$1000-2000

銅胎掐絲琺瑯瓜紋盒

1367

**A BLUE AND WHITE UNDERGLAZE RED HANGING
PANEL**

Of vertical rectangular form, finely painted in blue and white and underglaze red to depict three birds perching on tree branch, with inscriptions and signed Wang Bu to the left with four painted seal marks, all within hardwood frame. Republic period.

Length: 16 3/4 in (42.5 cm) Width: 11 7/8 in (30.0 cm)

\$1500-2500

王步款 青花釉裡紅瓷板



1368

A BLUE AND WHITE 'FLOWER BASKET' DISH

Decorated to the centre with a basket of flowers on large blossom, rim further decorated with motifs of books and flowers. 18th century, Qing Dynasty period.

Height: 1 in (2.5 cm) Width: 9 in (22.9 cm)

\$300-500

清 十八世纪 青花花籃紋盤



1369

A PAIR OF FAMILLE ROSE 'STORY SCENES' BOWLS

Each decorated to the exterior with figures in palace terrace and in outdoor garden, interior glazed in turquoise green, the base inscribed with Tongzhi period mark. Tongzhi period, 19th century, Qing Dynasty.

Height: 2 1/4 in (5.7 cm) Width: 7 3/4 in (19.7 cm)

\$300-500

清同治 粉彩人物故事碗一對



1370

A PAIR OF FAMILLE ROSE 'TAOIST IMMORTALS' BOWLS

Each bowl decorated to the exterior with three Taoist immortals in an outdoor setting, the base inscribed with Tongzhi mark. Tongzhi period, 19th century, Qing Dynasty.

Height: 2 in (5.1 cm) Width: 7 1/8 in (18.1 cm)

\$300-500

清同治 粉彩八仙圖碗一對



1371

A BLUE AND WHITE 'FIGURES' LOBED DISH

The interior of the lobed rim dish decorated with two figures playing chess on river bank, below an inscription. Qing Dynasty period.

Height: 1 5/8 in (4.1 cm) Width: 5 3/4 in (14.6 cm)

\$300-500

清 青花'重陽佳朝'人物小盤



1372

A BLUE AND WHITE TEAPOT AND COVER

The body painted to each side with floral sprays, bamboo sectioned spout and handle, cover with similar motifs. 18th century.

Height: 5 1/4 in (13.3 cm) Width: 7 1/2 in (19.1 cm)

\$300-500

十八世紀 青花花卉紋茶壺



1373

A FAMILLE ROSE TRIANGLE 'FIGURES' BOWL

The triangle shaped bowl decorated with figures and landscape around the exterior, the base and interior covered in turquoise green. Qing Dynasty period.

Height: 3 3/4 in (9.5 cm) Width: 9 1/2 in (24.1 cm)

\$300-500

清 粉彩人物山水三角盤



1374

A FAMILLE ROSE 'WU SHUANG PU' BOWL

The bowl decorated to the exterior with figures from Table of Peerless Heroes, with inscription identifying the figure. 19th century, Qing Dynasty period.

Height: 2 1/4 in (5.7 cm) Width: 8 3/8 in (21.3 cm)

\$300-500

清 十九世紀 粉彩無雙譜碗



1375

A BLUE AND WHITE 'RIVER VILLAGE' DISH

The interior decorated with a riverscape of village and boat, the base inscribed with four character 'Man Tang Fu Ji'. Qing Dynasty period.

Height: 1 1/8 in (2.9 cm) Width: 6 1/4 in (15.9 cm)

\$300-500

清 青花漁村山水紋小盤



1376

A CHINESE BLUE AND WHITE 'SCHOLAR' VASE

Of cylindrical form, body decorated with scholar under pine talking with two boys carrying basket of flowers, the vase body flanked by pair of moulded mythical beast handles. Qing Dynasty period.

Height: 9 1/2 in (24.1 cm) Width: 5 1/4 in (13.3 cm)

\$300-500

清 青花高士童子鋪首瓶





1377

A FAMILLE ROSE 'FLOWERS AND BIRDS' TRAPEZOID VASE

Each side of the body painted with different scenes of birds and flowers, with shaped openings on top and base, wooden stand. Qing Dynasty period.

Height: 9 1/4 in (23.5 cm) Width: 9 1/2 in (24.1 cm)

\$300-500

清 粉彩花鳥紋菱形瓶 帶木座



1378

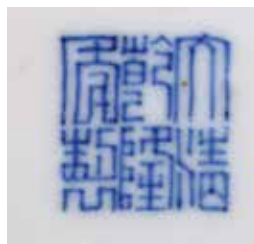
A BLUE AND WHITE 'LANDSCAPE' CYLINDER VASE

Of cylindrical form, the body painted in blue and white with landscape including figures, mountains, boats, huts, river. Qing Dynasty period.

Height: 13 5/8 in (34.6 cm) Width: 5 3/8 in (13.7 cm)

\$300-500

清 青花山水紋筒瓶



1379

A NATURAL JADEITE 'LOTUS' PENDANT

Guarantee Natural Type A Jadeite, otherwise full refund within 30 days

\$5000-8000

Provenance:

Private collection, Glendora, California

天然翡翠荷花無事牌墜

來源:

南加州格蘭多納市私人收藏



1380

A NATURAL JADEITE DOUBLE GOURD PENDANT

Guarantee Natural Type A Jadeite, otherwise full refund within 30 days

\$6000-8000

Provenance:

Private collection, Glendora, California

天然翡翠葫蘆鑽石墜

來源:

南加州格蘭多納市私人收藏



1381

A NATURAL JADEITE MELON AND FINGER CITRON PENDANT

Guarantee Natural Type A Jadeite, otherwise full refund within 30 days

\$5000-8000

Provenance:

Private collection, Glendora, California

天然隨型佛手瓜瓠墜

來源:

南加州格蘭多納市私人收藏

1382

A NATURAL JADEITE CABOCHON RING

Guarantee Natural Type A Jadeite, otherwise full refund within 30 days

\$3000-5000

Provenance:

Private collection, Glendora, California

天然翠玉蛋麵戒指

來源:

南加州格蘭多納市私人收藏



1384

A NATURAL JADEITE BEADED NECKLACE

Guarantee Natural Type A Jadeite, otherwise full refund within 30 days

\$1000-1500

Provenance:

Private collection, Glendora, California

天然翠玉手鍊一隻

來源:

南加州格蘭多納市私人收藏



1383

A PAIR NATURAL JADEITE EARRINGS

Guarantee Natural Type A Jadeite, otherwise full refund within 30 days.

\$2000-3000

Provenance:

Private collection, Glendora, California

天然翠玉圓型耳墜一對

來源:

南加州格蘭多納市私人收藏





1385

A LARGE CINNABAR LACQUER 'SCHOLARS' VASE

The vase carved through the lacquer to depict officials engaging in scholarly leisures within cartouches, the interior mounted with gilt bronze, base drilled with hole. 19th century, Qing Dynasty period.

Height: 19 1/2 in (49.5 cm) Width: 10 in (25.4 cm)

\$500-800

清 十九世紀 剔紅開光高士雅集圖瓶



1386

A JAPANESE SATSUMA VASE

The tall vase decorated in iron-red, blue, green enamels and gilt with flowers. Mounted as lamp. Meiji period.

Height: 9 1/2 in (24.1 cm) Width: 5 1/4 in (13.3 cm)

\$300-500

明治時期 薩摩焼人物瓶

1387

**A JAPANESE CLOISONNE ENAMEL
CHRYSANTHEMUM VASE**

the oviform vase decorated in cloisonné enamels, depicting flowers, including chrysanthemums and irises, and foliage on a deep-blue ground, mounted as lamp. Meiji period.

Height: 12 in (30.5 cm) Width: 5 1/4 in (13.3 cm)

\$300-500

明治時期 七寶燒菊花瓶



1388

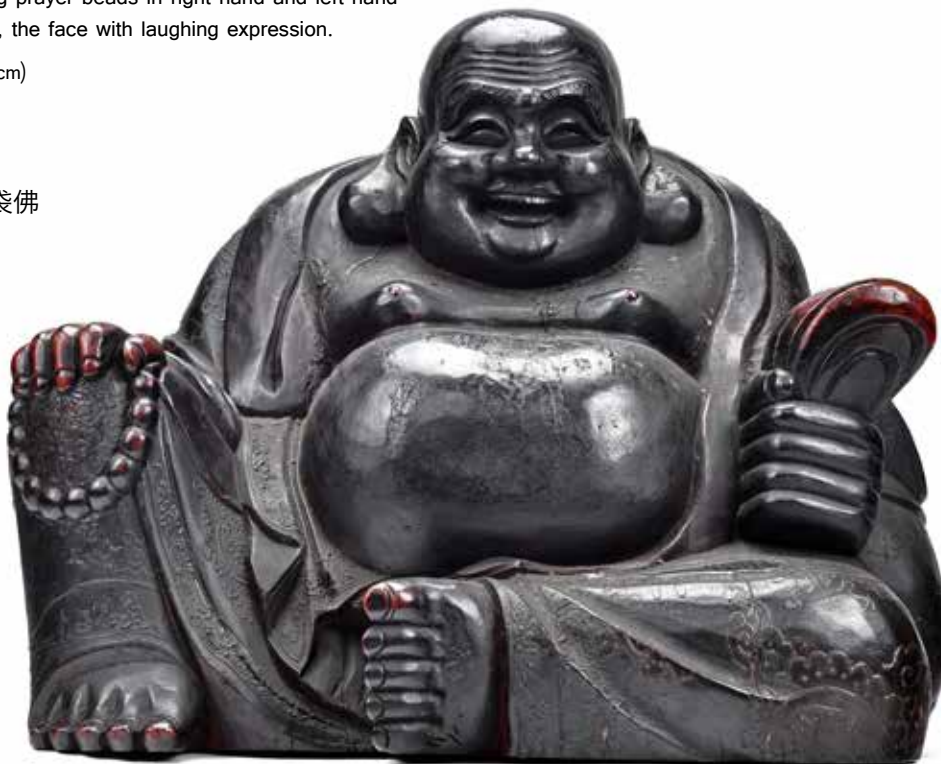
**A VERY LARGE CHINESE LACQUERED WOOD BUDAI
BUDDHA**

Carved with one leg raised and another resting at ease, the bodhisattva holding prayer beads in right hand and left hand holding cloth soak, the face with laughing expression.

Height: 25 in (63.5 cm)

\$1500-2000

大型漆木胎布袋佛



Terms and Conditions of Sale

1. Unless otherwise indicated, all Property will be offered by California Asian Art Auction Gallery USA as agent for Consignor.
2. California Asian Art Auction Gallery USA reserves the right to vary the terms of sale, and any such changes shall become part of these Conditions of Sale.
3. California Asian Art Auction Gallery USA shall conduct the auction per lot as numbered in the catalogue. It reserves the right to withdraw any lot prior to sale and shall have no liability whatsoever for such withdrawal.
4. ALL PROPERTIES ARE SOLD AS IS, WHERE IS. Neither California Asian Arts Gallery USA nor the consignor makes any warranties or representations of any kind or nature with respect to property or its value, and in no event shall be responsible for the correctness of description, genuineness, attribution, provenance, authenticity, authorship, completeness, condition of property or estimate of value. We do not guarantee authorship, signatures, or markings. No statement (oral or written) in this catalog, at the sale, or elsewhere shall be deemed such a warranty or representation, or any assumption of responsibility. All measurements are approximate.
 - a. All items are available for your examination prior to bidding. Written and oral descriptions are our opinions and should in no way be construed as a guarantee of any kind as to authenticity, age, condition, materials or any other feature of items being sold.
 - b. California Asian Art Auction Gallery USA will assert best effort to catalog every lot correctly and will attempt to point out any defects, but will not be responsible or liable for the correctness of the catalog or other descriptions of the lot.
 - c. We recommend the prospective bidders examine all items in which they have an interest. By placing a bid, either in person, by phone, absentee or via the Internet, the bidders signify that they have examined the items as fully as possible, or that they have chosen not to examine the items.
 - d. If your item(s) are damaged in shipping, you will need to contact the shipper to file a claim. If your item(s) are being shipped and there is a condition problem upon receipt, you are expected to notify us immediately by phone at 626-281-9588. Any condition concerns will be null and void after the 10th business day following the end of the auction. Please note that if you pay late and thus receive your item(s) late, this does not qualify you for special privileges.
 - e. NO REFUNDS! ALL SALES ARE FINAL!
5. The highest bidder acknowledged by the auctioneer shall be the buyer. The auctioneer has the right to reject any bid, to advance the bidding at his absolute discretion, and in the event of any disputes between bidders, the auctioneer shall have the sole and final discretion either to determine the successful bidder or to re-offer and resell the item in dispute. If any dispute arises after sale, the California Asian Art Gallery USA's sale record shall be conclusive in all respects.
6. If the auctioneer determines that any opening or later bid or any advance bid is not commensurate with the value of the Property offered, he may reject the same and withdraw the Property from sale.
7. Upon the fall of the hammer, title to any offered lot or article will immediately pass to the highest bidder as determined in the exclusive discretion of the auctioneer. Such bidder thereupon assumes full risk and responsibility for the property sold, agrees to sign any requested confirmation of purchase, and agrees to pay the full purchase price therefore or such part upon such terms as the Company may require.
 - a. All property shall be paid for and removed by the purchaser at his/her expense within seven (7) days of sale and, if not so removed, may be sold by the Company, or sent by the Company to a public warehouse, at the sole risk and charge of the purchaser(s), and the Company may prohibit the purchaser from participating, directly or indirectly, as a bidder or purchaser in any future sale or sales. The Company will not be responsible for any loss, damage, theft, or otherwise responsible for any goods left in the Company's possession after seven (7) days.
 - b. If the foregoing conditions or any applicable provisions of law are not complied with, in addition to other remedies available to the Company and the Consignor (including without limitation the right to hold the purchaser(s) liable for the bid price) the Company, at its option, may either cancel the sale, retaining as liquidated damages all payments made by the purchaser(s), or resell the property. In such event, the purchaser(s) shall remain liable for any deficiency in the original purchase price and will also be responsible for all costs, including warehousing, the expense of the ultimate sale, and the Company's commission at its regular rates together with all related and incidental charges, including legal fees.
 - c. Payment is a precondition to removal. Payment shall be by cash, certified check or similar bank draft, or any other method approved by the Company. Checks will not be deemed to constitute payment until cleared. The Company will charge interest of one and one-half percent (1 1/2%) per month on any balance remaining thirty (30)

days after the day of sale. Any exceptions must be made upon the Company's written approval of credit prior to sale.

8. Unless the sale is advertised and announced as "without reserve", each lot is offered subject to a reserve and the Company may implement such reserves by bidding through its representatives on behalf of the Consignors. In certain instances, the Consignor may pay less than the standard commission rate where the Company or its representative is a successful bidder on behalf of the Consignor. Where the Consignor is indebted to the Company, the Company may have an interest in the offered lots and the proceeds there from other than the broker's Commissions, and all sales are subject to any such interest.

9. All bidders are required to complete the registration form (and re-seller's permit, if applicable), provide all details requested, and present a valid identification card to obtain a paddle. If a representative is bidding on a company's or someone's behalf, an authorization letter with contact information of the actual bidder will also be required. A prospective buyer may opt to bid live on the floor, leave an absentee or telephone bid, or bid through Internet.

10. Telephone bids must be submitted 24 hours prior to auction, and may be limited to the capacity of our staff pool. As telephone and online bids are options of convenience to the buyers, California Asian Art Auction Gallery USA maintains that it will not be held responsible for live Internet bids that are not sent, received, or executed by the administrator. We reserve the right to charge your credit card up to 18% of the average estimate of the lot bid on, and to refuse bids in the best interest of the Auction House.

11. Absentee Bids is a free and confidential service. Any absentee bids must be left in writing with the California Asian Art Auction Gallery USA 24 hours before the start of auction. In the event identical bids are submitted, the earliest will take precedence. Absentee bids shall be executed in competition with other absentee bids, any applicable reserve, bids from the audience and bids live on-line. No "buy" bids or "unlimited" bids shall be accepted at any time for any purpose. Please note the execution of written bids is offered as an additional service for no extra charge at the bidder's risk and is undertaken subject to California Asian Art Auction Gallery USA's other commitments at the time of the auction; California Asian Art Auction Gallery USA therefore cannot accept liability for error or failure to place such bids, whether through negligence or otherwise.

12. As a convenience to our clients, we furnish pre-sale estimates for all materials included in the auctions. These estimates are only our approximate valuations and should be taken as educated guess based upon comparable auction values, not as "prices." Bidding normally begins at about one-half the low estimate, but the final bid price may well be less than or more than any estimate printed.

13. California Asian Art Auction Gallery USA A buyer's premium will be added to the successful bid price and is payable by the purchaser as part of the total purchase price. The buyer's premium is 22% of the successful bid price up to and including \$50,000, 20% between \$50,001 and \$500,000, and 18% on any amount in excess of \$500,000. And there will be additional 5% for internet live bid winner.

14. INTERNATIONAL BIDDERS: YOU ARE RESPONSIBLE TO MEET ALL CUSTOMS AND IMPORT-EXPORT REGULATIONS. WE WILL ASSIST BUT CANNOT BE HELD LIABLE FOR INTERNATIONAL LAWS AFFECTING THE DELIVERY OF YOUR ITEMS.

15. Packing, shipping and insurance (including reimbursement for damage or loss) of purchased loss is the sole responsibility of the purchaser. California Asian Art Auction Gallery USA will assist and offer recommendations of suitable third party carriers. We are not responsible for any delays on the part of this third party, should there be any. We recommend shipping all items insured. Insurance costs through third party carriers will be borne by the purchaser and in case of damage, insurance claims should be taken up with the third party carrier. Should any damage or loss occur to items transported by a third party, we can assist the purchaser in filing proper claims for reimbursement but will not be held responsible for the outcome.

16. If any applicable conditions herein are not complied with by the purchaser, in addition to other remedies available to it by law, including without limitation the right to hold the purchaser liable for the total purchase price, California Asian Art Gallery USA at its option may either (a) cancel the sale, retaining as liquidated damages all payments made by the purchaser or (b) resell the property at public auction without reserve or minimum selling price, and the purchaser will be liable for any deficiency and costs, including handling charges, expenses of both sales, the commission on both sales at regular rates, all other charges due hereunder and incidental damages.

17. These terms and conditions of sale, as well as the respective rights and obligations of California Asian Art Gallery USA and any purchasers or bidder at any sale of California Asian Art Gallery USA, shall be governed by and construed and enforced in accordance with the laws of the State of California.

BID INCREMENTS

Price of Auction	Increment	Buyer's Premium
\$0 - \$99	\$10	22% for successful bid of 0\$ - \$50,000
\$100 - \$499	\$25	
\$500 - \$999	\$50	
\$1,000 - \$2,999	\$100	
\$3,000 - \$4,999	\$250	
\$5,000 - \$9,999	\$500	
\$10,000 - \$29,999	\$1,000	20% for successful bid of \$50,001 - \$500,000
\$30,000 - \$49,999	\$2,500	
\$50,000 - \$99,999	\$5,000	18% for successful bid of \$500,000 +
\$ 100,000 +	\$10,000	

**BIDDER REGISTRATION FORM****投標註冊表**

AUCTION TITLE 拍賣活動名稱		AUCTION DATE 拍賣日期	
TITLE 稱謂	FIRST NAME 名字	LAST NAME 姓氏	
COMPANY NAME 公司名字		RESALE NUMBER 轉售許可號	
STREET 街道地址			
CITY 城市	STATE/PROVINCE 州/省	POSTAL CODE 郵政編碼	COUNTRY 國家
DAYTIME PHONE 日常電話號	MOBILE NUMBER 移動電話號	FAX 傳真號	
E-MAIL 電子郵件地址			
PAYMENT OPTION 付款選項	<input type="checkbox"/> CREDIT CARD 信用卡	<input type="checkbox"/> WIRE TRANSFER 電匯	<input type="checkbox"/> CHECK/MONEY ORDER 支票/現金
CREDIT CARD TYPE 信用卡類型		NAME ON CARD 持卡人姓名	
CREDIT CARD NUMBER 信用卡號		EXPIRATION DATE 到期日期	CCV 卡後三位安全號
BILLING ADDRESS (IF DIFFERENT) STREET 帳單郵寄地址			
CITY 城市	STATE/PROVINCE 州/省	POSTAL CODE 郵政編碼	COUNTRY 國家
PLEASE INDICATE HOW YOU WOULD PREFER TO RECEIVE YOUR INVOICES: 請選擇您想以何種方式收到帳單:		<input type="checkbox"/> E-MAIL 電子郵件	<input type="checkbox"/> POST/MAIL 郵寄

A BUYER'S PREMIUM WILL BE ADDED TO THE SUCCESSFUL BID PRICE AND IS PAYABLE BY THE BUYER AS PART OF THE TOTAL PURCHASE PRICE. THE BUYER'S PREMIUM SHALL BE: 20.00% UP TO AND INCLUDING \$20,000; 18.00% BETWEEN \$20,001 TO \$500,000; 16.00% ABOVE \$500,000; LIVE AUCTIONEER: ADDITIONAL 3.00%

PAYMENT IS A PRECONDITION TO REMOVAL. PAYMENT SHALL BE BY CASH, CERTIFIED CHECK OR SIMILAR BANK DRAFT, OR ANY OTHER METHOD APPROVED BY THE COMPANY. ALL PROPERTY SHALL BE PAID FOR AND REMOVED BY THE PURCHASER AT HIS/HER EXPENSE WITHIN SEVEN (7) DAYS OF SALE. ALL SALES ARE FINAL! AUCTION HOUSE IS NOT RESPONSIBLE FOR PACKING AND SHIPPING; PLEASE CONTACT US FOR RECOMMENDED SHIPPERS.

PLEASE WRITE CLEARLY AND PLACE YOUR BIDS AS EARLY AS POSSIBLE, AS IN THE EVENT OF IDENTICAL BIDS, THE EARLIEST BID RECEIVED WILL TAKE PRECEDENCE. BIDS SHOULD BE SUBMITTED AT LEAST 24 HOURS BEFORE THE AUCTION. WE REQUIRE A CREDIT CARD ON FILE TO REGISTER FOR BID.

* I UNDERSTAND AND AGREE TO THE TERMS AND CONDITIONS.

SIGNATURE 簽名	PRINT NAME 正楷簽名	DATE 簽署日期
---------------------	------------------------	------------------

FOR OFFICE USE ONLY :

CUSTOMER NUMBER : _____ PADDLE NUMBER: _____ SALE NUMBER: _____
DEPOSIT AMOUNT: _____

3380 Flair Dr., #113 - 116, El Monte, CA 91731 USA

Tel: 001-888-977-9588 or 001-626-281-9588 Fax: 001-888-859-4378

E-Mail: info@caa-auction.com Website: http://www.caa-auction.com



TELEPHONE BIDDING FORM

電話競標出價表

AUCTION TITLE 拍賣活動名稱	AUCTION DATE 拍賣日期	CUSTOMER CODE 客戶編碼	
TITLE 稱謂	FIRST NAME 名字	LAST NAME 姓氏	
COMPANY NAME 公司名稱	RESALE NUMBER 轉售許可號		
STREET 街道地址			
CITY 城市	STATE/PROVINCE 州/省	POSTAL CODE 郵政編碼	COUNTRY 國家
DAYTIME PHONE 日常電話號	MOBILE NUMBER 移動電話號	FAX 傳真號	
E-MAIL 電子郵箱地址			
TELEPHONE NUMBER DURING THE SALE (TELEPHONE BIDS ONLY) 競拍電話號（僅用於電話競拍）			
PAYMENT OPTION 付款選項	<input type="checkbox"/> CREDIT CARD 信用卡	<input type="checkbox"/> WIRE TRANSFER 電匯	<input type="checkbox"/> CHECK/MONEYORDER 支票/現金
CREDIT CARD TYPE 信用卡類別	NAME ON CARD 持卡人姓名	EXPIRATION DATE 到期日期	
CREDIT CARD NUMBER 信用卡卡號	CCV 卡後三位數安全號		
BILLING ADDRESS (IF DIFFERENT) STREET 帳單郵寄地址			
CITY 城市	STATE/PROVINCE 州/省	POSTAL CODE 郵政編碼	COUNTRY 國家

Bids should be submitted at least 24 hours before the auction. We require a credit card on file to register for bid.

投標請至少在拍賣開始 24 小時以前遞交。我們需要您提供有效的信用卡信息方可進行註冊拍賣。

LOT NUMBER 拍品編號	LOT NAME 拍品名字

Buyer needs to pay for all lots after auction and can pick them up or to have them packaged/shipped by us within 7 days following the sale. Buyer needs to pay all packing and shipping charges, and/or delivery charges. California Sales Tax is added unless the purchase is for resale or shipped out of state.
拍賣結束，買方需付清全部貨款後，可自行提取貨物，或由本拍賣行在 7 天之內代為包裝和運輸，一切費用由買家承擔。若該拍品非轉售或非運至境外，買家則需另承擔加州銷售稅。

**I have read and agreed to the terms and conditions of sale.

**本人已閱讀並同意所有條款。

Signature 簽名

Print Name 正楷簽名

Date 簽署日期





微信公眾賬號
Wechat Page

2646 Durfee Ave, El Monte, CA 91732 USA
Tel 001-626-281-9588 Fax 1-888-859-4378
www.caa-auction.com info@caa-auction.com
Wechat ID 公司微信號: jiazhoupaimai